

Pai(小頭)-賓士黑 MODEL OUTLOOK PARTS



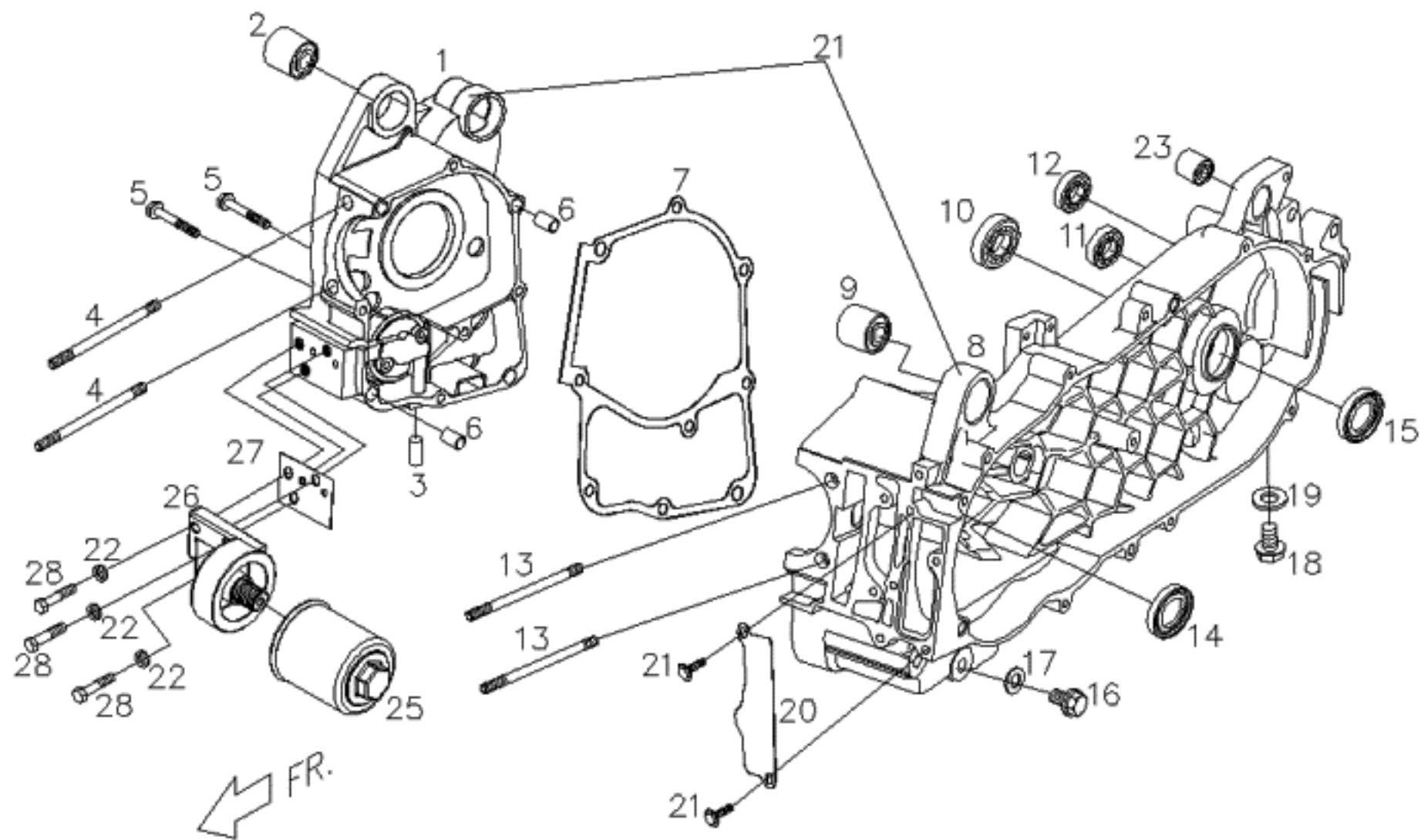
PAI-C03 可動-外觀顏色(賓士黑)(MOVABLE (BLACK))					
NO.	Part No.	Q'TY	PART NAME	PART NAME	SPECIFICATION
項目	零件號碼	數量	零件中文名稱	零件英文名稱	規格
1	P5613000690	1	方向把手上蓋(賓士黑)	UPPER COVER,HANDBAR	BLACK
2	P66210026900	1	擋風板(賓士黑)	WINDSHIELD	BLACK
3	P5626013690	1	前下蓋(賓士黑)	COVER, FRT LOWER	BLACK
4	P662F3006900	1	左邊飾條(側腳柱安全開關) 69黑	LH SIDE COVER	BLACK
5	P6626500690	1	右邊飾條(賓士黑)	RH SIDE COVER	BLACK
6	P6625301690	1	左車身蓋(賓士黑)	LH BODY COVER	BLACK
7	P6625501690	1	右車身蓋(賓士黑)	RH BODY COVER	BLACK
8	P6625700690	1	後蓋 (賓士黑)	REAR COVER	BLACK
9	P6676000690	1	後行李架(賓士黑)	LUGGAGE SHELF,RR	BLACK
10	P6632000690	1	前土除,前段 (賓士黑)	FRT FENDER,FRT SECTION	BLACK

Pai(小頭)-雪白色 MODEL OUTLOOK PARTS



PAI-C07 可動-外觀顏色(雪白色)(MOVABLE (WHITE))					
NO.	Part No.	Q'TY	PART NAME	PART NAME	SPECIFICATION
項目	零件號碼	數量	零件中文名稱	零件英文名稱	規格
1	P5613000710	1	方向把手上蓋(雪白)	UPPER COVER, HANDLEBAR	WHITE
2	P66210027100	1	擋風板(雪白色)	WINDSHIELD	WHITE
3	P5626013710	1	前下蓋(雪白)	FR LOWER COVER	WHITE
4	P662F3007100	1	左邊飾條(側腳柱安全開關) 71白	LH SIDE COVER	WHITE
5	P6626500710	1	右邊飾條(雪白色)	RH SIDE COVER	WHITE
6	P6625301710	1	左車身蓋(雪白色)	LH BODY COVER	WHITE
7	P6625501710	1	右車身蓋(雪白色)	RH BODY COVER	WHITE
8	P6625700710	1	後蓋 (雪白色)	REAR COVER	WHITE
9	P6676000710	1	後行李架(雪白色)	RR LUGGAGE BRACKET	WHITE
10	P6632000710	1	前土除,前段 (雪白色)	FRT FENDER,FRT SECTION	WHITE

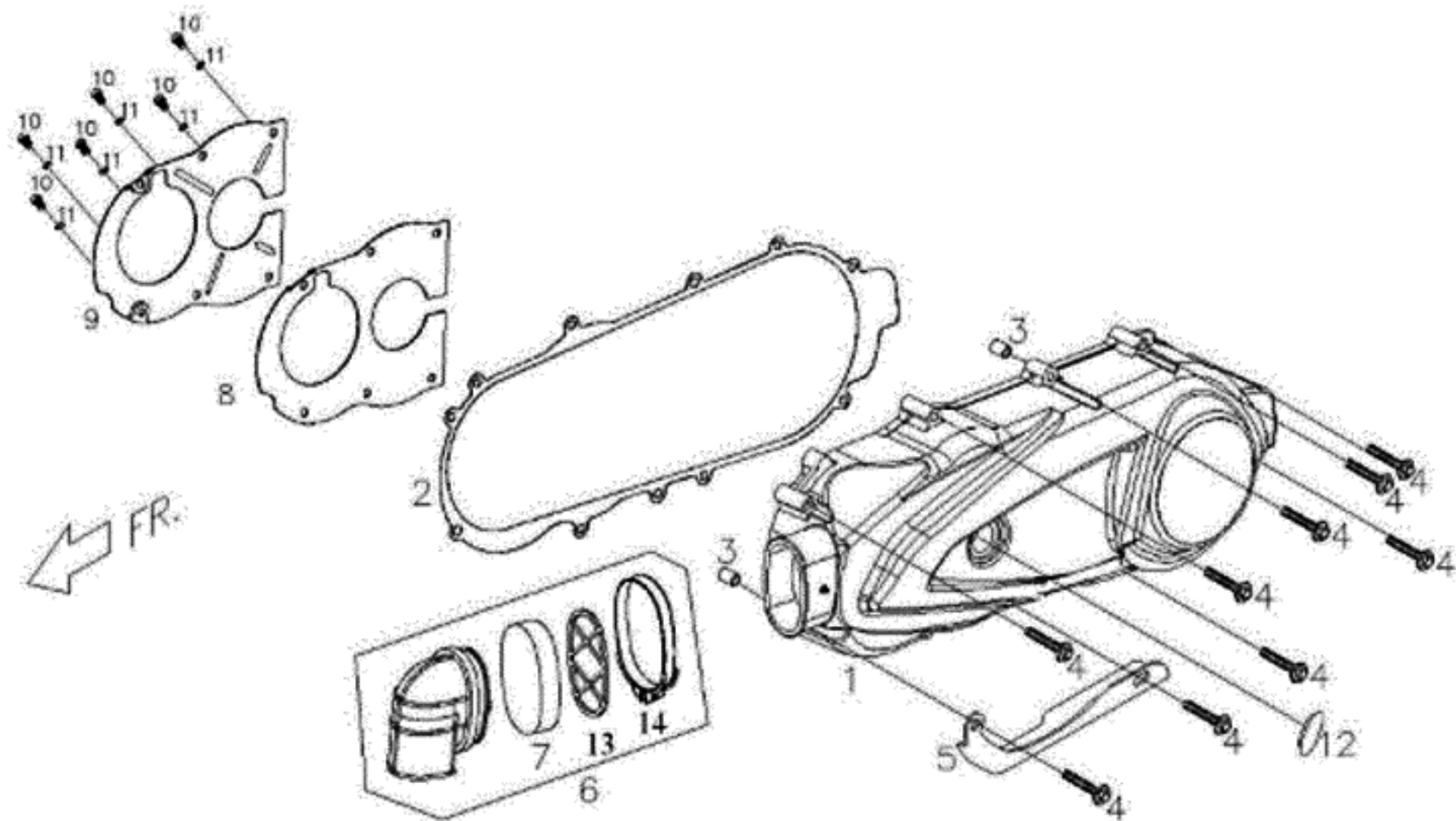
E1. 軸箱 (CRANKCASE)



PAI-E01 曲軸箱(CRANKCASE)					
NO.	Part No.	Q'TY	PART NAME	PART NAME	SPECIFICATION
項目	零件號碼	數量	零件中文名稱	零件英文名稱	規格
1	C10610000000S	1	C1、C2、C3右曲軸箱組合(售服)	CRANKCASE, RH	0
2	E1061020000	1	防震襯套(引擎吊架)	BUSH, QUAKEPROOF	0
3	G1061070000	1	油塞	OIL PLUG	0
4	90170818800	2	雙頭螺絲	STUD BOLT	0
5	90190605004	2	六角凸緣螺栓(M6*50L)鍍G	HEXANGON FLANGE BOLT	0
6	93540801400	2	定位銷	LOCK PIN	0
7	C5061041000	1	曲軸箱墊片	Crankcase Gasket	0
8	C2062012000	1	左曲軸箱	CRANKCASE,LH.	0
9	E1061020000	1	防震襯套(引擎吊架)	BUSH, QUAKEPROOF	0
10	96510620407	1	深槽滾珠軸承	DEEP GROOVE BALL BEARING	0
11	96510620200	1	滾珠軸承	BALL BEARING	0
12	96510620301	1	滾珠軸承	BALL BEARING	0
13	90170819500	2	雙頭螺栓	STUD BOLT	0
14	95572232601	1	TC油封	OIL SEAL, TC TYPE	0
15	95572032600	1	TC形油封	OIL SEAL, TC TYPE	0
16	90181201501	1	六角凸緣螺栓-鍍G	HEXIGON HEAD BOLT FLANGE	0
17	92141200006	1	平墊圈	WASHER	0
18	90190801202	1	六角凸緣螺栓鍍墨綠	HEXAGON FLANGE BOLT (M8*12L)	0
19	92140800001	1	平墊圈(8*1.6T)	WASHER (8*1.6T)	0
20	C1286320000	1	空氣進氣蓋隔板	PLATE, 2ND AIR COVER	0

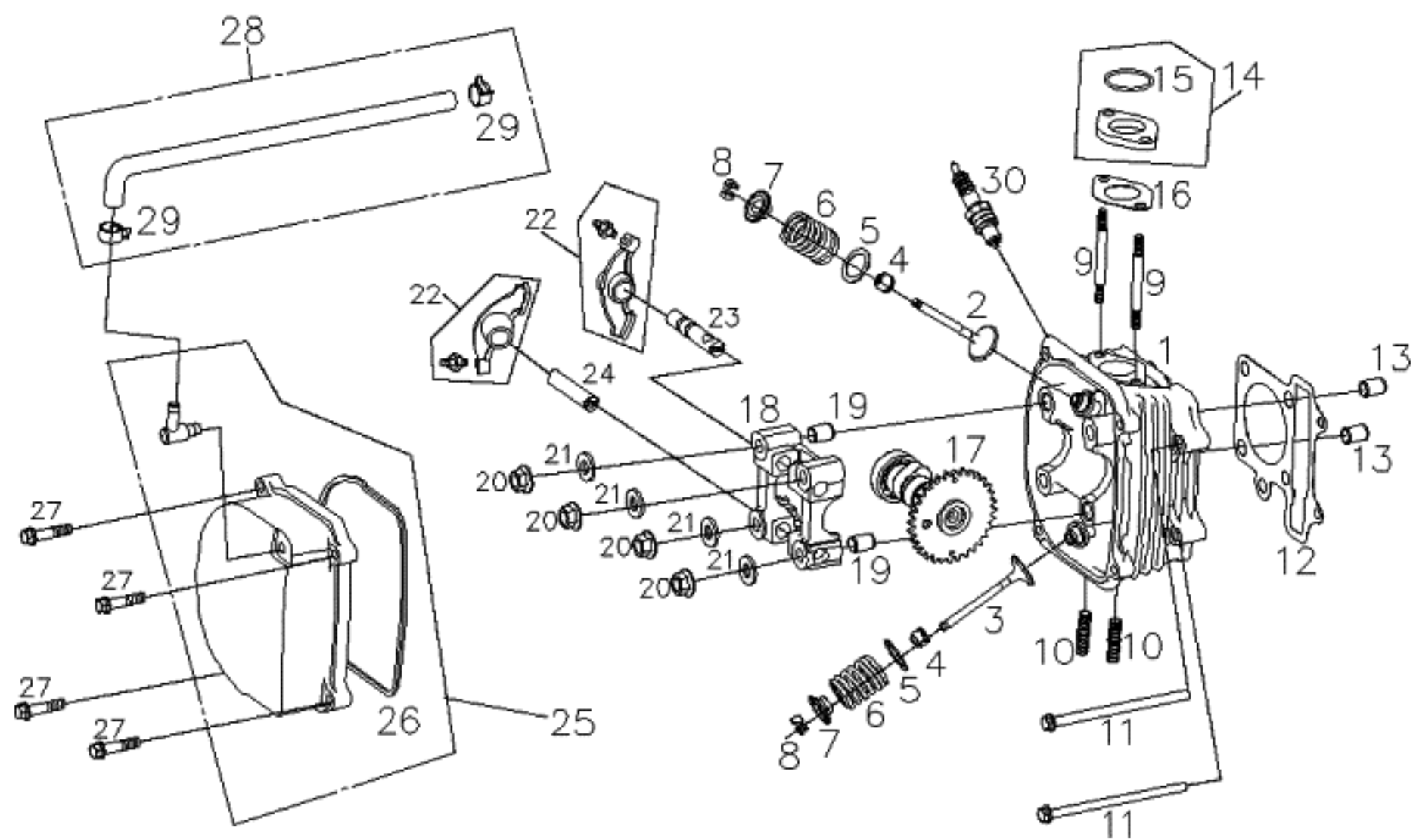
PAI-E01 曲軸箱(CRANKCASE)					
NO.	Part No.	Q'TY	PART NAME	PART NAME	SPECIFICATION
項目	零件號碼	數量	零件中文名稱	零件英文名稱	規格
21	C206K0110000	1	左右曲軸箱組合	CRANKCASE ASSY.RH/LH.	0
22	92140600011	3	平墊圈	WASHER	0
23	P1062020000	1	防震襯套	BUSH, QUAKEPROOF	0
24	90020804000	3	六角頭螺栓		0
25	C1082020000	1	機油濾清器	OIL FILTER	0
26	C1082030000	1	機油濾清器固定座	SEAT, OIL FILTER	0
27	C1082042000	1	機油濾清器墊片	GASKET,OIL FILTER	0
28	90190602002	3	六角凸緣螺栓(M6*20L)	HEXAGON FLANGE BOLT (M6*20L)	0

E2. 左邊蓋 LH SIDE COVER



PAI-E02 左邊蓋(LEFT SIDE COVER)					
NO.	Part No.	Q'TY	PART NAME	PART NAME	SPECIFICATION
項目	零件號碼	數量	零件中文名稱	零件英文名稱	規格
1	C20630106D0	1	左邊蓋 (霧面黑)PGO	LH., SIDE COVER	BLACK
2	C2063021000	1	左邊蓋襯墊	Gasket Left Cover	0
3	93540801400	2	定位銷	LOCK PIN	0
4	90190604001	10	六角凸緣螺栓	HEXAGON FLANGE BOLT (M6*40L)	0
5	C1062081000	1	中腳柱固定托架	BRACKET, CENTER STAND	0
6	C1063102000	1	通風管組合	BREATHER PIPE COMP.	0
7	C1063092000	1	過濾棉	SPONGE,BREATHER PIPE	0
8	C50630600000	1	左邊蓋隔板	PARTITION PLATE	0
9	C50631200000	1	隔板襯墊	GASKET PARTITION PLATE	0
10	90050500900	6	十字槽圓頭機器螺釘	CR ROUND HD MACHINE SCREW(M5	0
11	92110500000	6	彈簧鎖緊墊圈	SPRING LOCK WASHER	0
12	C17013000000	1	塑膠塞組合	PLASTICS PLUG ASSY.	0
13	C1063110000	1	固定板	FIXING PLATE	0
14	C1706280000	1	管夾	CLAMP	0

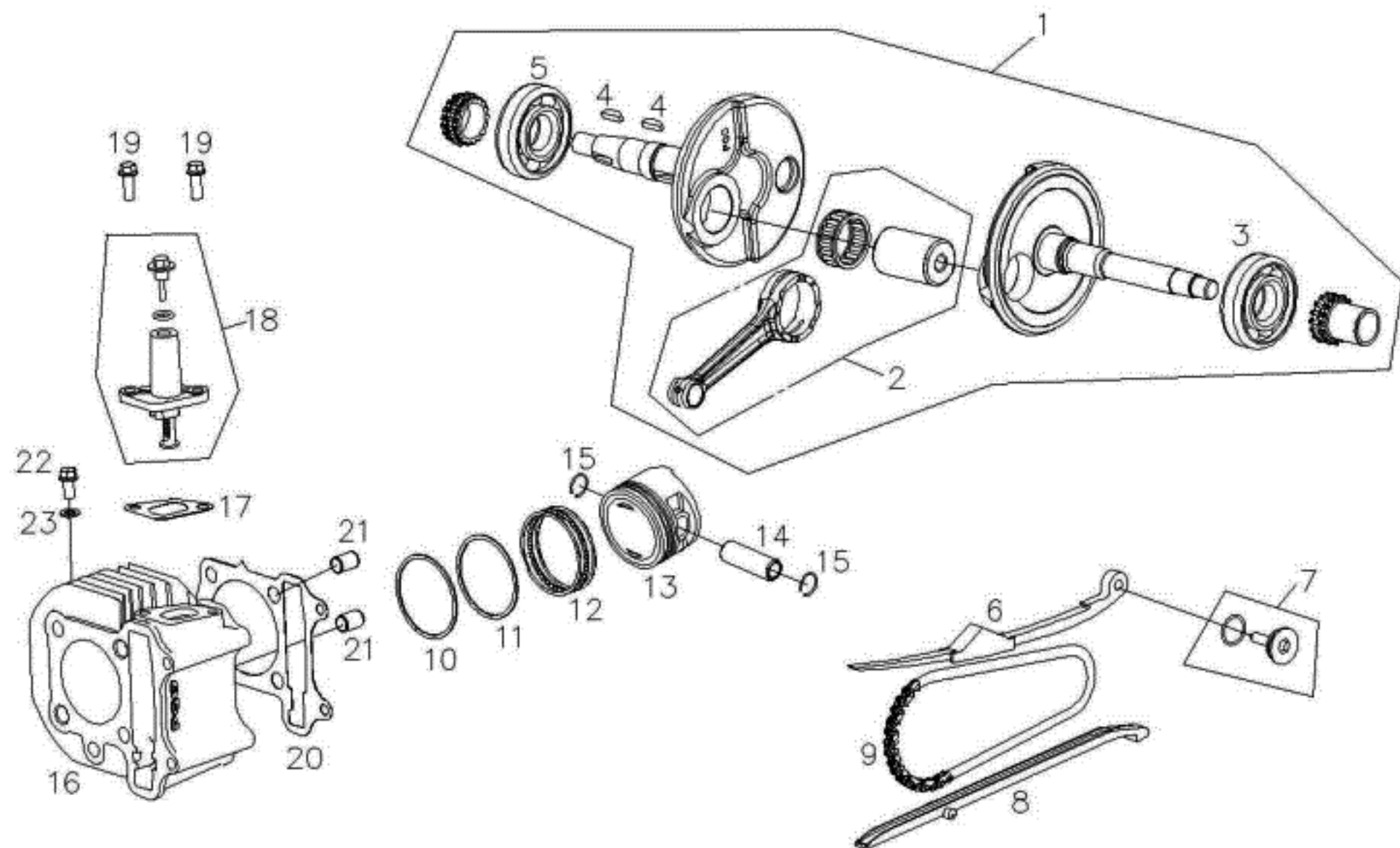
E3.汽缸頭 CYLINDER HEAD



PAI-E03 汽缸頭, 汽缸蓋(CYLINDER HEAD ASSY.)					
NO.	Part No.	Q'TY	PART NAME	PART NAME	SPECIFICATION
項目	零件號碼	數量	零件中文名稱	零件英文名稱	規格
1	C10710130001	1	汽缸頭	CYLINDER HEAD	W/O SAI
2	C1071300000	1	進氣閥	VALVE, INTAKE	0
3	C1071200000	1	排氣閥	VALVE, EXHAUST	0
4	C1071451000	2	門閥油封	SEAL, VALVE	0
5	92431600002	2	平墊圈	WASHER	0
6	C1071410000	2	閥門彈簧	VALVE SPRING	0
7	C1071440000	2	閥門彈簧承盤	RETAINER, VALVE SPRING	0
8	C1071430000	4	閥門栓	COTTER VALVE	0
9	90170606300	2	雙頭螺栓	STUD BOLT	0
10	90170802900	2	雙頭螺栓	STUD BOLT	0
11	90190610001	2	六角凸緣螺栓-鍍G	HEXAGON FLANGE BOLT (M6*100L)	0
12	C10710730000	1	汽缸頭墊片	CASKET HEAD CYL.	0
13	93541001401	2	定位銷 (10*14)	LOCK PIN (10*14)	0
14	C12613000001	1	化油器絕緣板組合	INSULATOR COMP., CARB	0
15	95512700001	1	O形環	O RING	0
16	C1261321000	1	化油器絕緣板墊片	Insulator Carb. Gasket	0
17	C1073001000	1	凸輪軸總成	CAMSHAFT COMP	0
18	C1072430000	1	凸輪軸固定座	CAMSHAFT HOLDER	0
19	93541001401	2	定位銷 (10*14)	LOCK PIN (10*14)	0
20	92040800000	4	六角凸緣螺帽(M8)鍍鋅(鉅)白色	HEXAGON FLANGE NUT	0

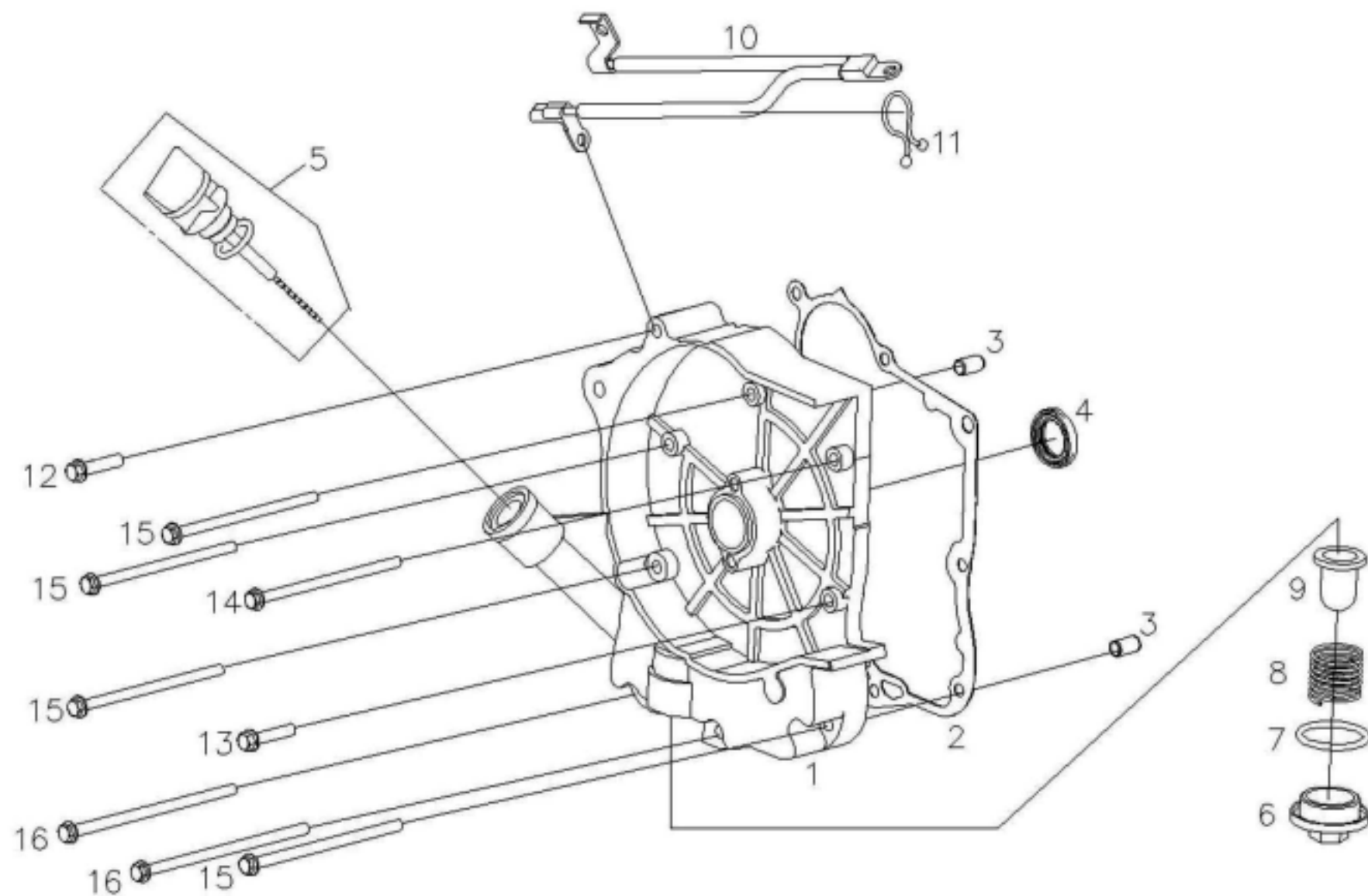
PAI-E03 汽缸頭 , 汽缸蓋(CYLINDER HEAD ASSY.)					
NO.	Part No.	Q'TY	PART NAME	PART NAME	SPECIFICATION
項目	零件號碼	數量	零件中文名稱	零件英文名稱	規格
21	92140800000	4	平墊圈(8.4D*17D*1.6T)	PLAIN WASHER	0
22	C1072020000	2	閥門搖臂組合	VALUE ROCKER ARM COM.	0
23	C1072050000	1	進氣閥搖臂軸	SHAFT, IN ROCKER ARM	0
24	C1072060000	1	排氣閥搖臂軸	SHAFT, EX ROCKER ARM	0
25	C10711100002	1	汽缸頭蓋	COVER,CYLIENDER HEAD	0
26	C1071120000	1	汽缸頭蓋襯墊	GASKET, CYLINDER HEAD COVER	0
28	ES0711900001	1	通氣管組合	TUBE CYL., COMP.	0
29	92221100001	2	板狀管夾		0
30	C12220000003	1	火星塞(CR6HSA)	SPARKING PLUG	(NGK CR6HSA)

E4. 曲軸 / 汽缸 CRANKSHAFT / CYLINDER



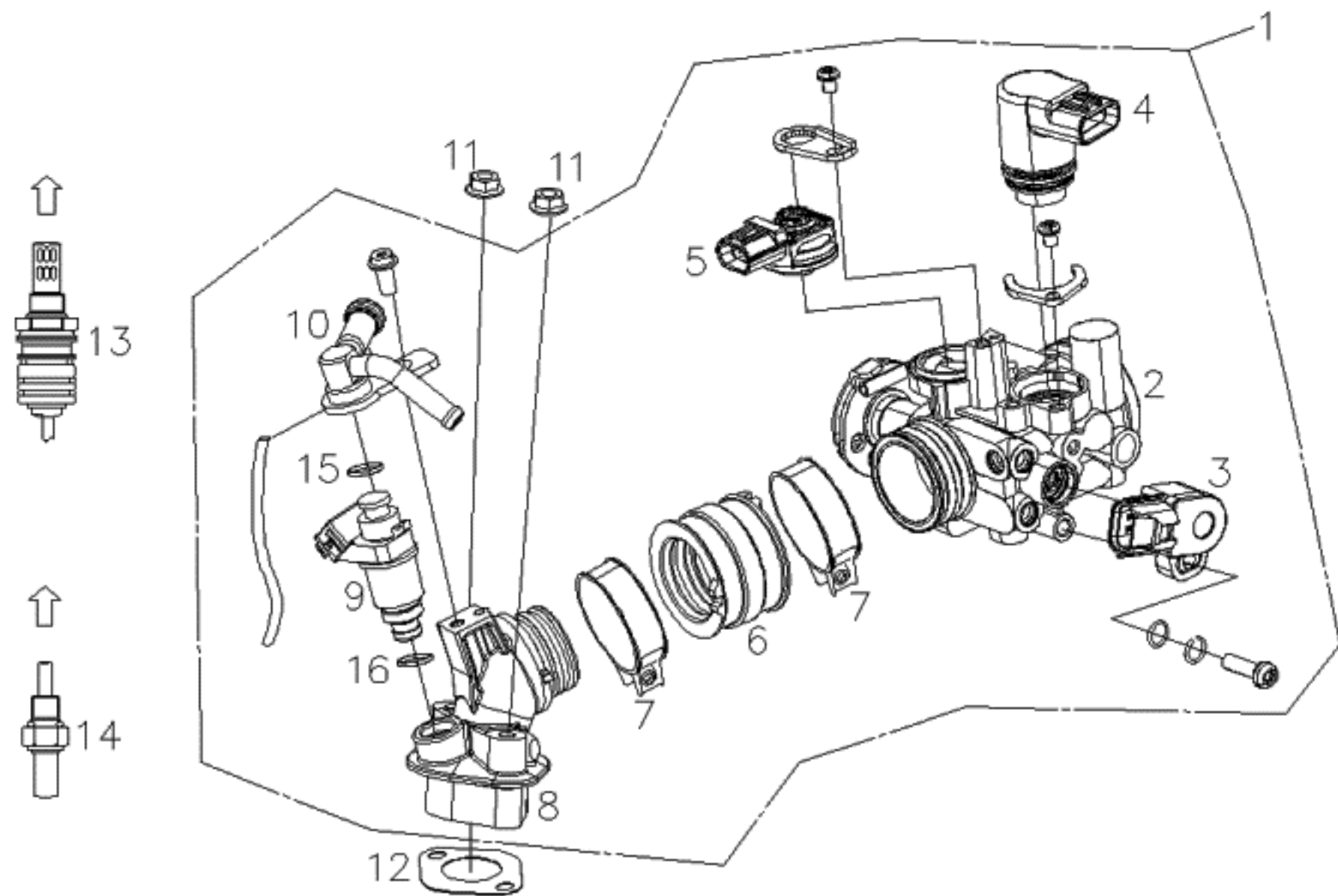
PAI-E04 汽缸, 活塞, 曲柄軸總成(CYLINDER, CRANKSHAFT)					
NO.	Part No.	Q'TY	PART NAME	PART NAME	SPECIFICATION
項目	零件號碼	數量	零件中文名稱	零件英文名稱	規格
1	C10665050000	1	曲柄軸總成	CRANK SHAFT ASSY.	0
2	C106F020000	1	連桿組合	CONNECTING ROD COMP	0
3	C1062100000	1	滾珠軸承(特殊)	ROLLER BEARING	0
4	93530402500	2	半月鍵(C1066502000之附件)	WOODRUFF KEY	0
5	C1062100000	1	滾珠軸承(特殊)	ROLLER BEARING	0
6	C1072440000	1	鏈條拉力桿	TENSIONER, TIMING CHAIN	0
7	C1072490000	1	拉力桿螺絲組合	SCREW ASSY, TIMING CHAIN TENS	0
8	C1072470000	1	鏈條導件	GUIDE COMP, TIMING CHAIN	0
9	C1072460000	1	凸輪軸鏈條	CHAIN, CAMSHAFT	0
10	C10673100001	1	活塞環(1)	PISTON RING (1)	0
11	C1067321000	1	活塞環(2)	PISTON RING (2)	0
12	C1067402000	1	刮油環組合	OIL SCRAPER RING COMP	0
13	C10670100004	1	活塞	PISTON	0
14	C1067110000	1	活塞銷	PISTON PIN	0
15	C1067150000	2	活塞銷夾	CLIP, PISTON PIN	0
16	C1064011000	1	汽缸	CYLINDER	0
17	C10724820000	1	鏈條調整器墊片	Gasket, Chain Adjuster	0
18	C1072500000	1	鏈條調整器組合	CHAIN ADJUSTER ASSY	0
19	90190601604	2	六角凸緣螺栓-鍍G	HEXANGON FLANGE BOLT	0
20	C1064111000	1	汽缸墊片	Gasket Cyl.	0
21	93541001401	2	定位銷(10*14)	LOCK PIN(10*14)	0
22	90190601207	1	六角凸緣螺栓鍍G	HEXAGON FLANGE BOLT(M6*1.0P*1	0
23	92140600011	1	平墊圈	WASHER	0

E5. 右曲軸蓋 RH CRANKCASE COVER



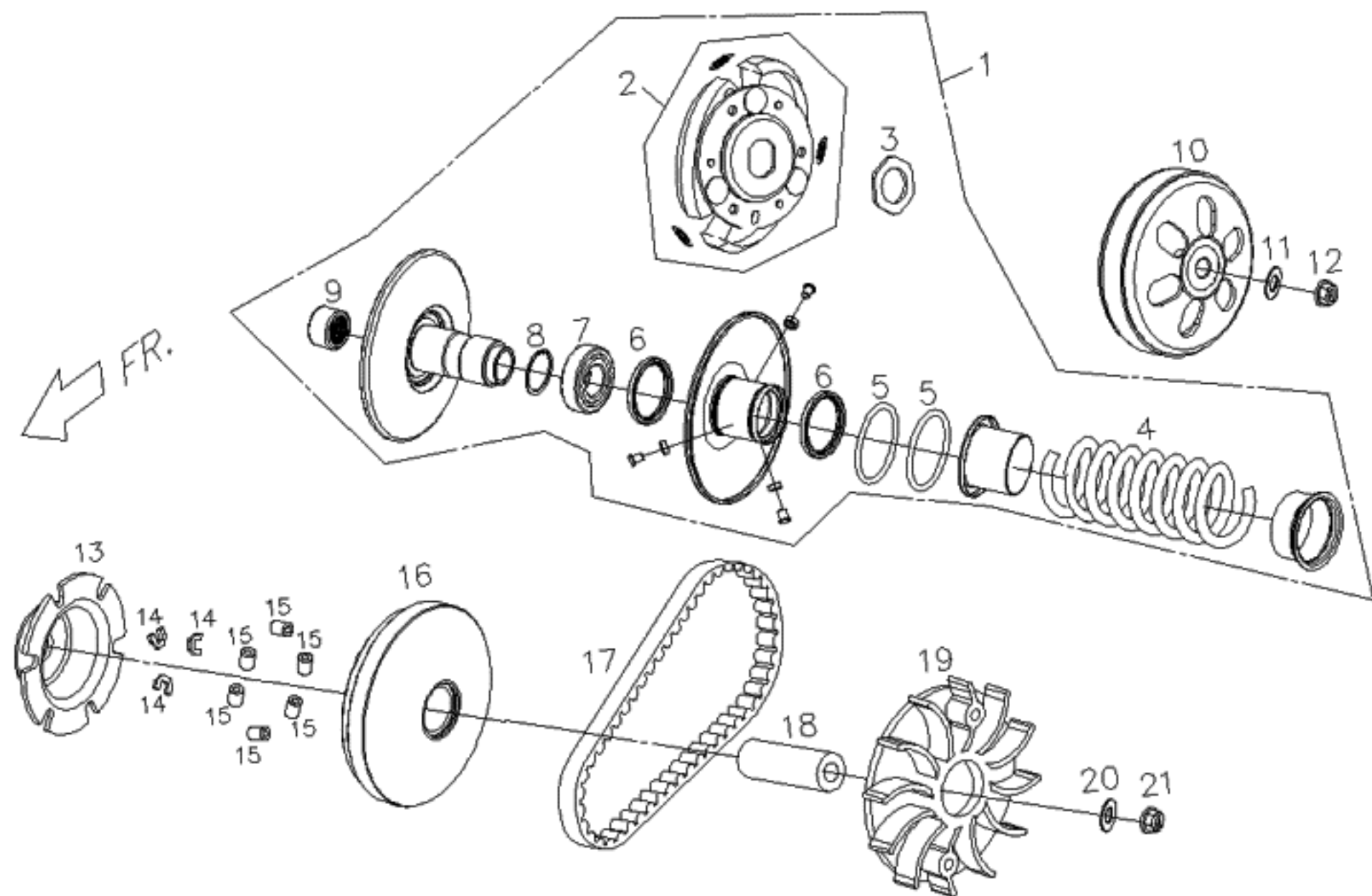
PAI-E05 右曲軸箱蓋(STARTING MOTOR)					
NO.	Part No.	Q'TY	PART NAME	PART NAME	SPECIFICATION
項目	零件號碼	數量	零件中文名稱	零件英文名稱	規格
1	C10680120002	1	右曲軸箱蓋	COVER, R. CRANKCASE	0
2	C1068021000	1	右曲軸箱蓋墊片	Gasket Rh. CrankCase Cover	0
3	93540801400	2	定位銷	LOCK PIN	0
4	95572030501	1	TC形油封	OIL SEAL, TC TYPE	0
5	C2068110000	1	機油尺組合	GAUGE, OIL LEVEL ASSY	0
6	C1062240000	1		CAP TAPPET ADJUSTING HOLE	
7	95513100000	1	O形環	O RING	0
8	C1062190000	1	六角凸緣螺栓(M6*30L)-鍍G	SPRING OIL FILTER SCREEN	0
9	G1062180000	1		SCREEN OIL FILTER	
10	P6241031000	1		STARTING MOTOR LINE	
11	C1701270000	1	塑膠鎖扣	PLASTICS LOCK	0
12	90190603001	1	六角凸緣螺栓(M6*30L)-鍍G	HEXAGON FLANGE BOLT (M6*30L)	0
13	90190602701	1	六角凸緣螺栓-鍍G	HEXAGON FLANGE BOLT (M6*27L)	
14	90190610001	1	六角凸緣螺栓-鍍G	HEXAGON FLANGE BOLT (M6*100L)	0
15	90190609501	4	六角凸緣螺栓-鍍G	HEXANGON FLANGE BOLT	0
16	90190611001	2	六角凸緣螺栓-鍍G	HEXANGON FLANGE BOLT	0

E6. 噴射系統 INJECTION



PAI-E06 EMS噴射系統(EMS INJECTION SYSTEM)					
NO.	Part No.	Q'TY	PART NAME	PART NAME	SPECIFICATION
項目	零件號碼	數量	零件中文名稱	零件英文名稱	規格
1	P62630100000	1	節流閥本體總成	THROTTLE BODY ASSY.	0
2	1431-C10-AA00	1	節流閥本體	THROTTLE BODY	0
3	1614-868-0000	1	TPS節流閥感應器	TPS THROTTLE SENSOR	0
4	40004520003	1	怠速控制閥	ISC VALVE	0
5	16149060002	1	壓力感知器	MAP SENSOR	0
6	F32630400000	1	連接管	INSULATOR	0
7	F32610600000	2	管束	clip	0
8	ES2610100001	1	進氣歧管	INTAKE MANIFOLD	0
9	D30NACY20501	1	Z 噴油嘴	INJECTOR ASSY	0
10	1785-402H-0040	1	洩油管	PIPE COMP.RUBBER	0
11	92040600000	2	六角凸緣螺帽(M6*1.0P)	HEXAGON FLANGE NUT (M6*1.0P)	0
12	ES261070000	1	歧管墊片		0
13	F32812100000	1	O2感知器	O2 SENSOR	0
14	ES0716100000	1	引擎油溫感知器	TE SENSOR	0

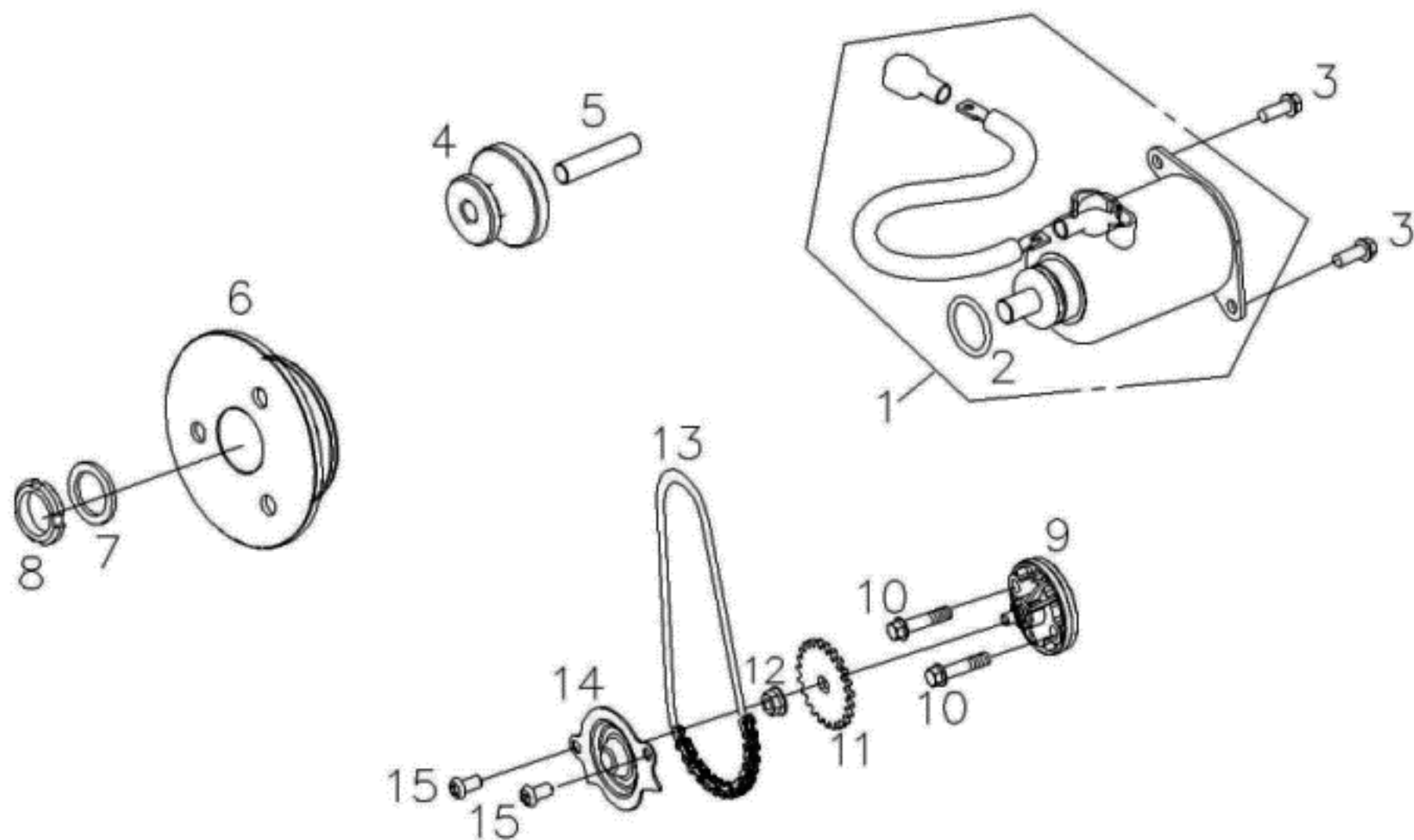
E7. 傳動皮帶輪 DRIVING PULLEY



PAI-E07 被驅動面皮帶輪組合(DRIVEN PULLEY)

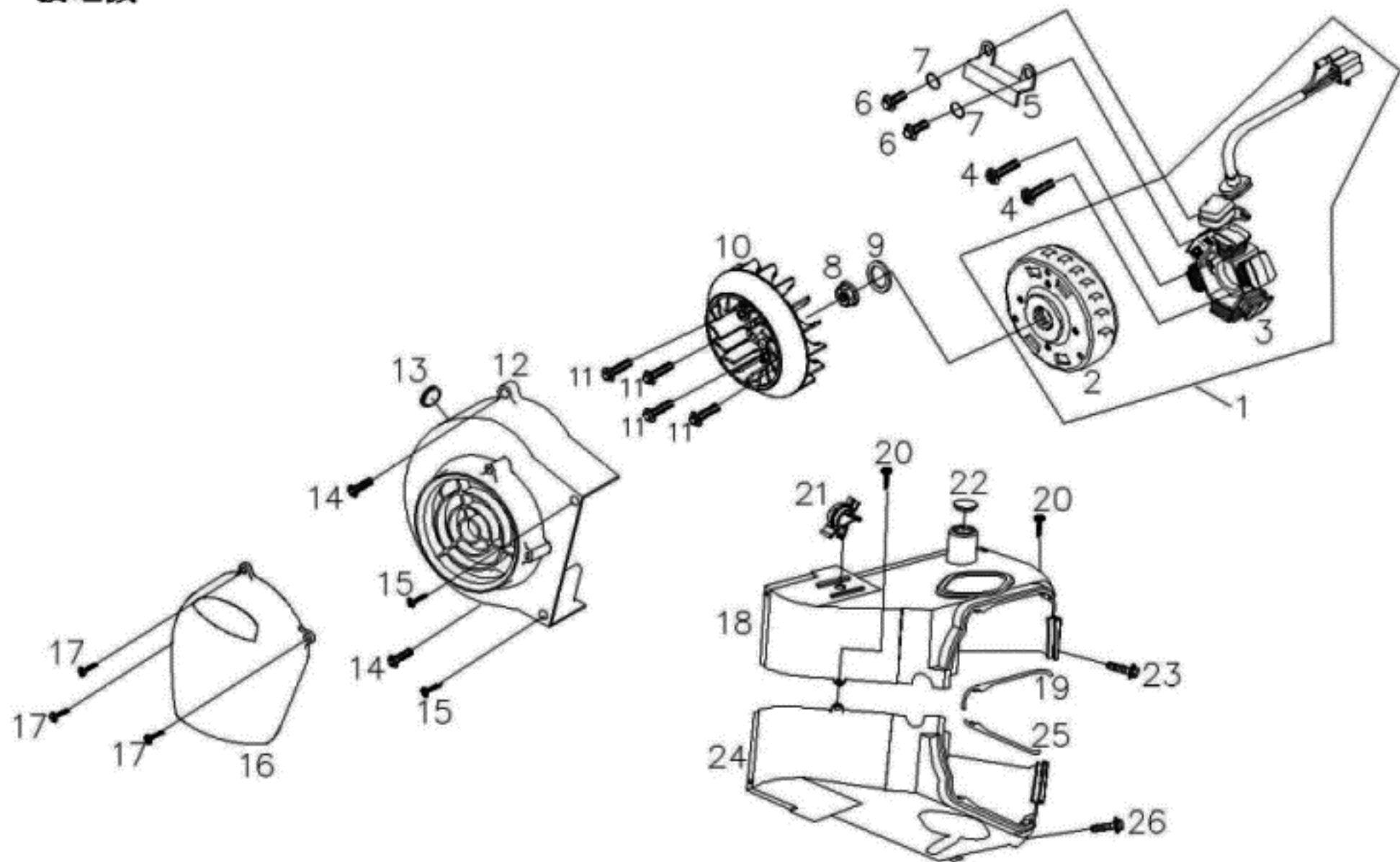
NO.	Part No.	Q'TY	PART NAME	PART NAME	SPECIFICATION
項目	零件號碼	數量	零件中文名稱	零件英文名稱	規格
1	C11237000002	1	被驅動面皮帶輪組合	BELT PULLEY COMP,DRIVEN FACE	0
2	C11236000001	1	驅動板組合	PLATE ASSY,DRIVE	0
3	P11234100001	1	特殊螺帽	NUT,SPECIAL	0
4	C11235210000	1	被驅動面彈簧	SPG.,DRIVEN FACE	0
5	95513700002	2	O型環(36.7D*1.92D)	O-RING	0
6	95593441401	2	G型油封	OIL SEAL , G TYPE	0
7	96520690201	1	單封深槽滾珠軸承	DEEP GROOVE BALL BEAR ONE SEAL	0
8	92162800000	1	C型扣環	RETAINING RING C TYPE	0
9	96550202900	1	滾針軸承	NEEDLE BEARING	0
10	C11235100001	1	離合器外套本體組合	OUTER BODY COMP.CLUTCH	0
11	92141500005	1	平墊圈(15D*26D*5T)	Plane Washer	0
12	92041200001	1	六角凸緣螺帽	HEXAGON FLANGE NUT	0
13	C11213100001	1	斜坡板	PAMP PLATE	0
14	C1121321000	3	滑塊	SLIDE PIECE	0
15	C1121200000	6	配重滾子組合(13g)	WEIGHT ROLLER ASSY	0
16	C11211000002	1	活動驅動面組合	FACE MOVABLE DRIVE	0
17	C21220000001	1	V型皮帶	V TYPE BELT	0
18	C11210500001	1	活動驅動面輪轂	BOSS DRIVE FACE	0
19	C11210600002	1	驅動面	DRIVE FACE	0
20	92141500005	1	平墊圈(15D*26D*5T)	Plane Washer	0
21	92041200001	1	六角凸緣螺帽	HEXAGON FLANGE NUT	0

E8. 啓動馬達 STARTING MOTOR



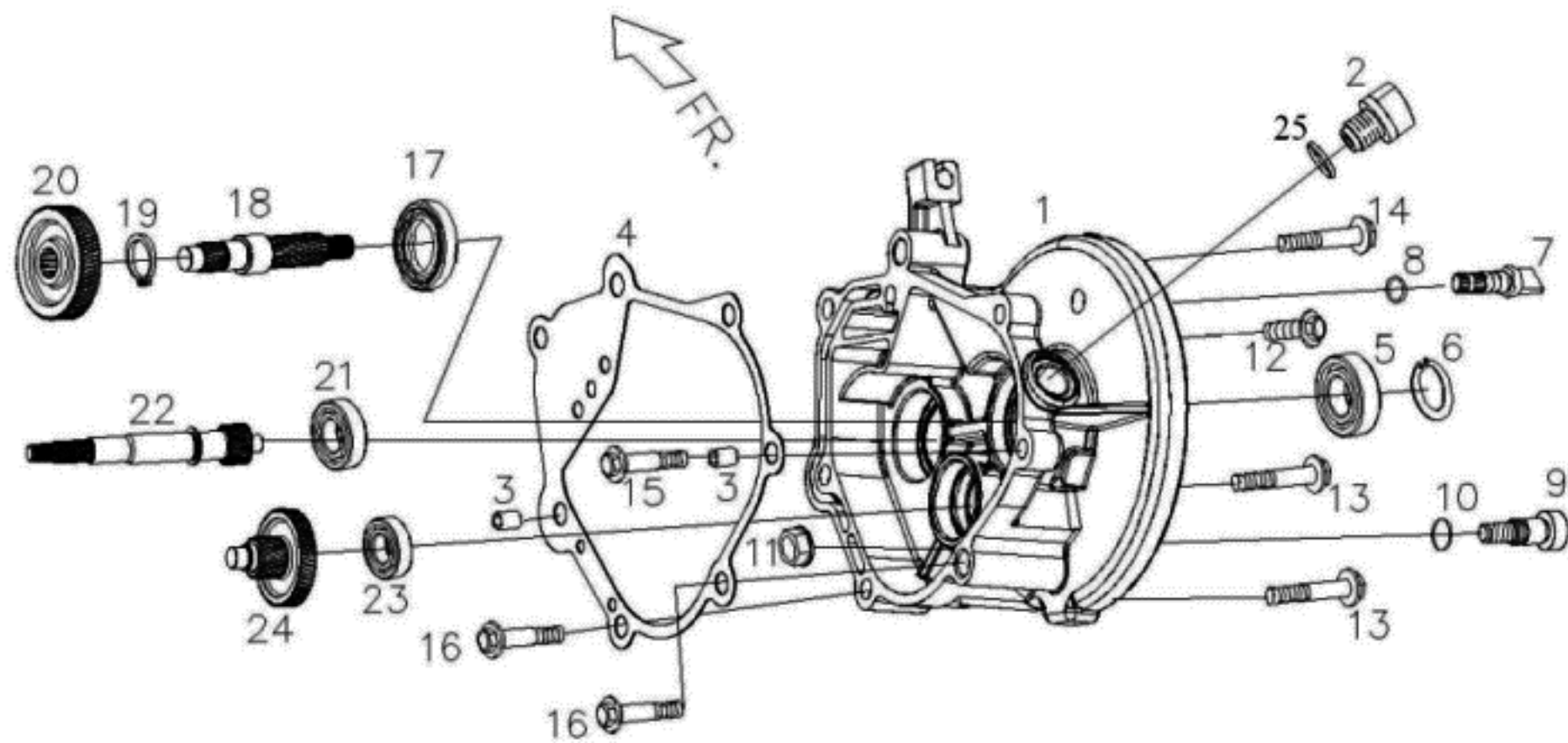
PAI-E08 啟動系統 (STARTING MOTOR)					
NO.	Part No.	Q'TY	PART NAME	PART NAME	SPECIFICATION
項目	零件號碼	數量	零件中文名稱	零件英文名稱	規格
1	C1241000000	1	起動馬達組合	MOTOR ASSY STARTER	0
2	95512400002	1	O形環	O RING	0
3	90190601604	2	六角凸緣螺栓-鍍G	HEXANGON FLANGE BOLT	0
4	C1242010000	1	起動減速齒輪	GEAR, STARTER REDUCTION	0
5	C1242040000	1	起動減速齒輪軸	SHAFT, START REDUCTION GEAR	0
6	C12430000001	1	單向離合器總成	ONE WAY CLUTCH ASSY	0
7	92142200000	1	平墊圈(22*31*2.5)	WASHER (22*31*2.5)	0
8	C1243060000	1	鎖定螺帽(L)	LOCK NUT (L)	0
9	C1081000000	1	機油泵總成	OIL PUMP COMP.	0
11	C1081030000	1	機油泵驅動齒輪	SPROCKET, OIL PUMP DRIVEN	0
12	92040600000	1	六角凸緣螺帽(M6*1.0P)	HEXAGON FLANGE NUT (M6*1.0P)	0
13	C1081220000	1	機油泵驅動鏈條	CHAIN, OIL PUMP	0
14	C1081230000	1	機油分隔板	SEPARATOR, OIL	0
15	90050601200	2	十字槽圓頭機器螺釘(M6*12L)	CR ROUND HD MACHINE SCREW (M	0

E9. 發電機 GENERATOR



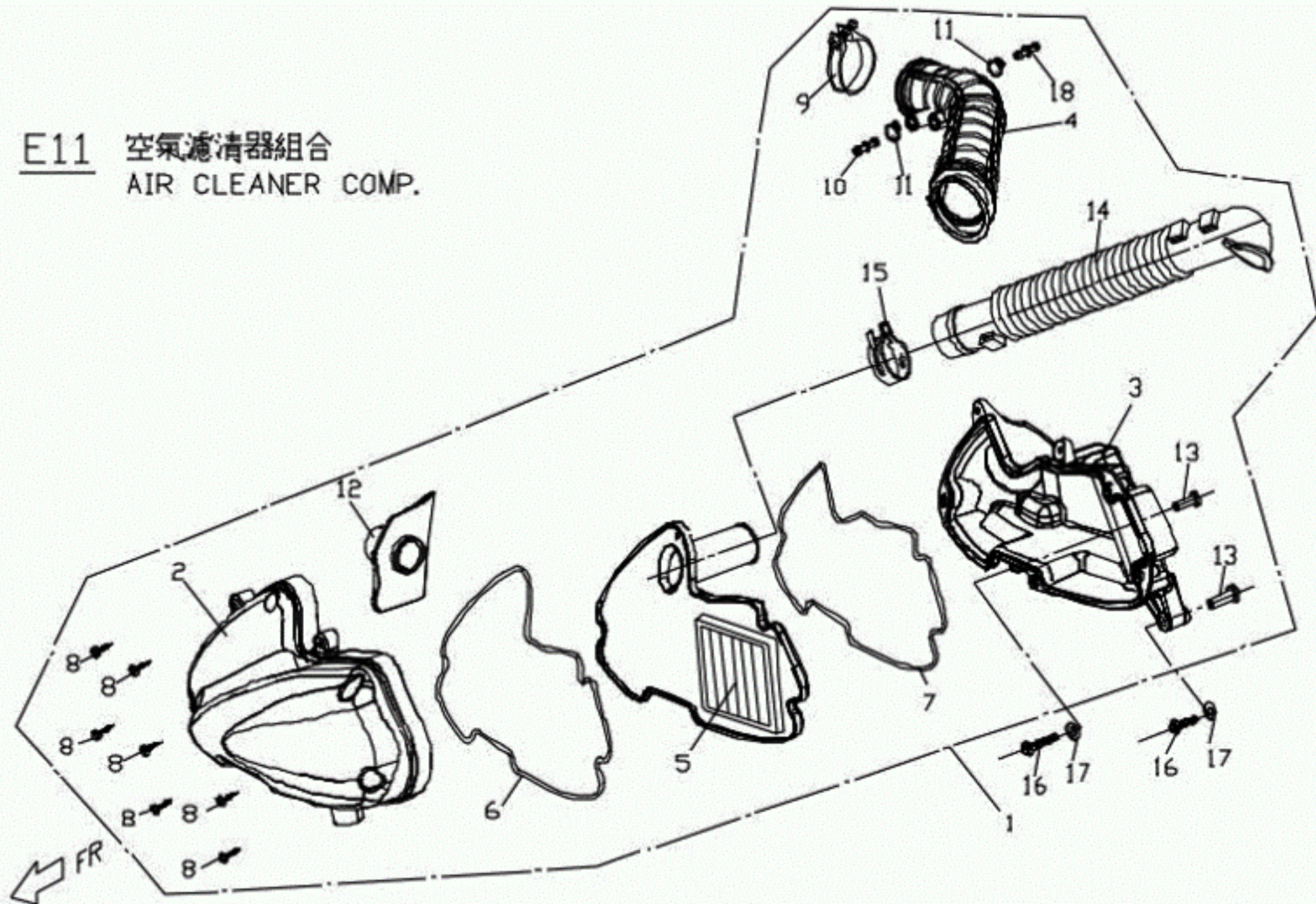
PAI-E09 風扇-發電機(GENERATOR)					
NO.	Part No.	Q'TY	PART NAME	PART NAME	SPECIFICATION
項目	零件號碼	數量	零件中文名稱	零件英文名稱	規格
1	F3221000000	1	飛輪磁電機總成	A.C.G COMP.	0
2	F3221010000	1	飛輪	FLYWHEEL COMP	0
3	F3221020000	1	固定轉子	STATOR COMP	0
4	90040602700	2	十字槽盤頭機器螺釘	C-R PAN HD.MACHINE SCREW	0
5	C1706640000	1	A . C . G壓板	A.C.G PLATE	0
6	90190501201	2	六角凸緣螺栓	HEXAGON FLANGE BOLT (M5*12L)	0
7	92110500000	2	彈簧鎖緊墊圈	SPRING LOCK WASHER	0
8	92041200000	1	六角凸緣螺帽	HEXAGON FLANGE NUT	0
9	92141500005	1	平墊圈(15D*26D*5T)	Plane Washer	0
10	C1043001000	1	風扇	FAN	0
11	90190601206	4	六角凸緣螺栓鍍墨綠	Hexangon Flange Bolt	0
12	C1042001000	1	風扇罩	FAN COVER	0
13	C1042030000	1	橡膠塞	RUBBER PLUG	0
14	90180602002	2	六角凸緣螺栓(M6*20L)-鍍G	HEXAGON FLANGE BOLT (M6*20L)	0
15	90150501602	2	十字槽扁圓頭自攻螺釘-鍍G	C-R RECESS PAN HD. TAPPING	0
16	C1042242000	1	風扇罩蓋	COVER, FAN HOOD	0
17	90110401600	3	十字槽盤頭自攻螺絲(16L)	CR PAN HD TAPPING SC	0
18	C10422100003	1	冷卻罩 (2)	COOLING COWL (2)	0
19	C1042220000	1	冷卻罩油封 (2)	SEAL, COOLING COWL (2)	0
20	90150501602	2	十字槽扁圓頭自攻螺釘-鍍G	C-R RECESS PAN HD. TAPPING	0
21	C1701290000	1	塑膠鎖扣	PLASTICS LOCK	0
22	C1701260000	1	橡膠塞	RUBBER PLUG	0
23	90180602002	1	六角凸緣螺栓(M6*20L)-鍍G	HEXAGON FLANGE BOLT (M6*20L)	0
25	C1042120000	1	冷卻罩油封 (1)	SEAL, COOLING COWL (1)	0
26	90180602002	1	六角凸緣螺栓(M6*20L)-鍍G	HEXAGON FLANGE BOLT (M6*20L)	0

E10. 齒輪箱 GEAR BOX



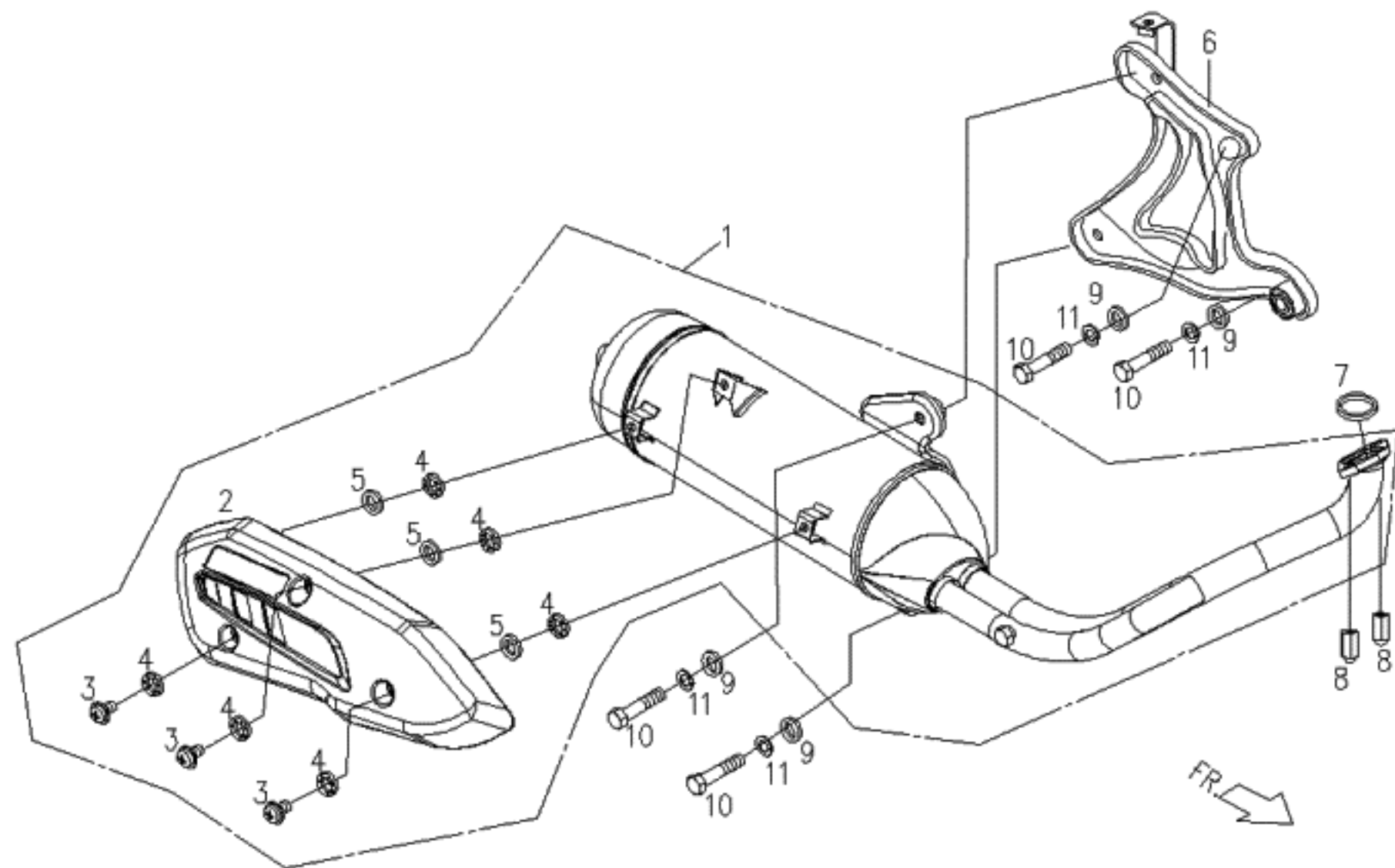
PAI-E10 傳動系(GEARBOX)					
NO.	Part No.	Q'TY	PART NAME	PART NAME	SPECIFICATION
項目	零件號碼	數量	零件中文名稱	零件英文名稱	規格
1	C2141011000	1	傳動箱蓋	TRANSMISSION COVER	0
2	P1062150000	1	機油螺栓	OIL BOLT	0
3	93541001401	2	定位銷 (10*14)	LOCK PIN (10*14)	0
4	C2141021000	1	傳動箱蓋襯墊	Trans Cover Gasket	0
5	96530622200	1	雙封深槽滾珠軸承	BALL BEARING, DOUBLE SEALED	0
6	92165000000	1	C型扣環 (孔用)	RETAINING RING C TYPE	0
7	C24074440000	1	後煞車凸輪	CAM, REAR BRAKE	0
8	95511200000	1	O型環(12.3D*2)	O RING	0
9	C2407431000	1	後煞車蹄樞軸	SHOE PIVOT, REAR BK	0
10	95510800000	1	O形環(7.5*1.5)	O RING(7.5*1.5)	0
11	92060800000	1	六角凸緣螺帽 (防鬆M8*1.25P)	HEXAGON FLANGE NUT (LOOSEPRO	0
12	90190803003	1	六角凸緣螺栓	HEXAGON FLANGE BOLT (M8*30L)	0
13	90190804003	2	六角凸緣螺栓	HEXAGON FLANGE BOLT (M8*40L)	0
14	90190805001	1	六角凸緣螺栓 (墨綠)	HEXAGON FLANGE BOLT (M8*50L)	0
15	90190804501	1	六角凸緣螺栓	HEXAGON FLANGE BOLT (M8*45L)	0
16	90190804003	2	六角凸緣螺栓	HEXAGON FLANGE BOLT (M8*40L)	0
17	95572742702	1	TC型油封	Oil Sealtc TC Type	0
18	C11414120000	1	後軸	AXLE DRIVE	0
19	92172200000	1	C型扣環(22)	C TYPE RETAINING RING	0
20	C11413110000	1	最終齒輪	FINAL GEAR	0
21	96510630100	1	深槽滾珠軸承	DEEP GROOVE BALL BEARING	0
22	C11411000001	1	驅動軸	DRIVING SHAFT	0
23	96510600200	1	深槽滾珠軸承	DEEP GROOVE BALL BEARING	0
24	C11412000001	1	惰齒輪組合	IDLE GEAR COMP	0
25	95511300001	1	O形環	O RING	0

E11 空氣濾清器組合
AIR CLEANER COMP.



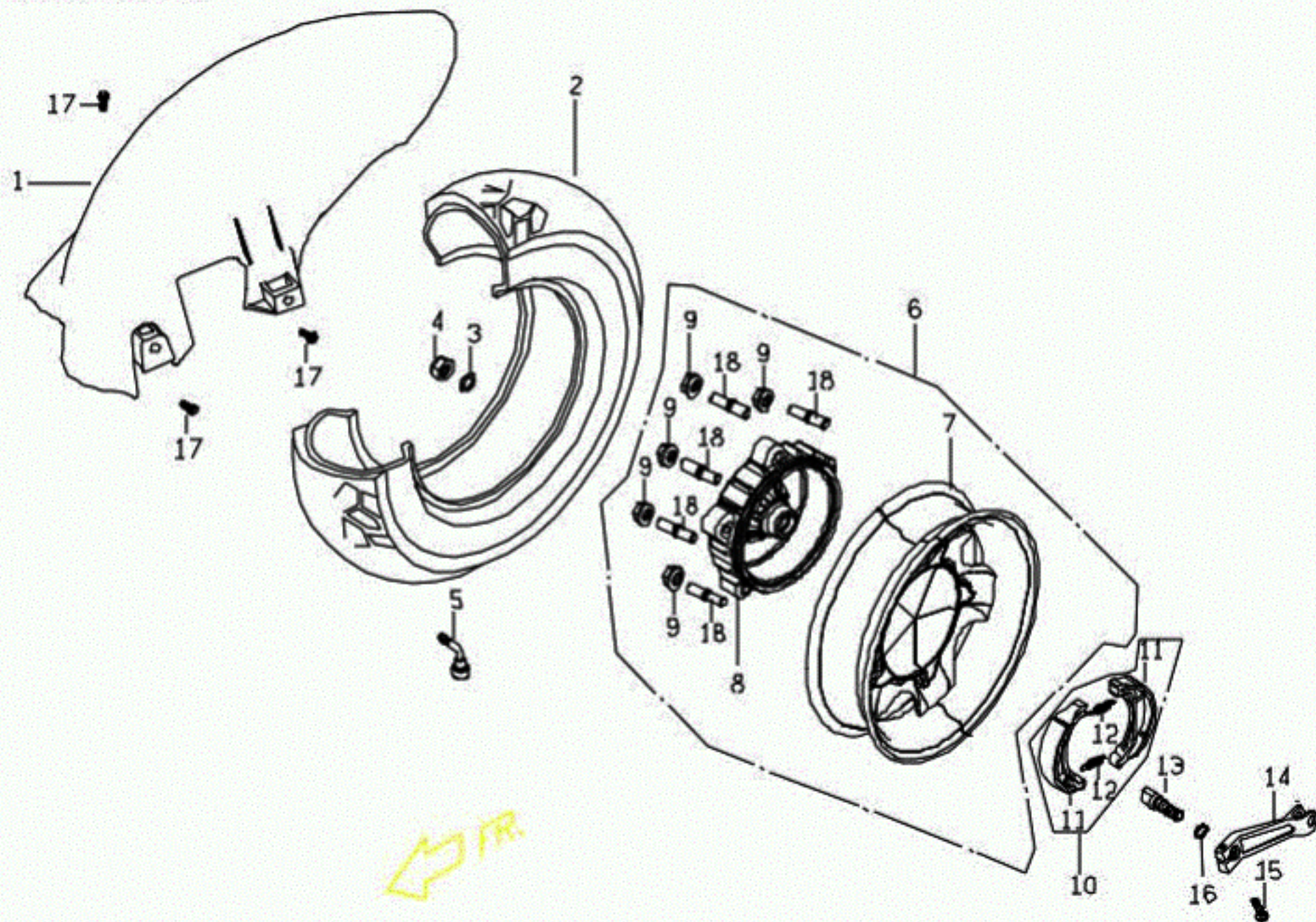
PAI-E11 空氣濾清器組合(AIR CLEANER COMP)					
NO.	Part No.	Q'TY	PART NAME	PART NAME	SPECIFICATION
項目	零件號碼	數量	零件中文名稱	零件英文名稱	規格
1	P62620000005	1	空氣濾清器組合(外銷版)	AIR CLEANER COMP	0
2	P6262020000	1	空氣濾清器蓋	COVER, AIR CLEANER	0
5	P6262030000	1	空氣過濾紙蕊器	AIR FILTER	0
6	P6262040000	1	空氣濾清器襯墊(1)	PACKING, AIR FILTER	0
7	P6262230000	1	空氣濾清器襯墊(2)	PACKING, AIR CLEANER	0
8	90150502000	7	十字槽圓頭自攻螺釘	CR TRUSS HD MACHINE SCREW	0
9	P62621100001	1	管束管束(125cc用)	CLAP	0
10	P6262360000	2	二通接管	PIPE,TWO WAY	0
11	92201200000	2	軟管夾	HOSE CLAMP	0
12	P6262050000	1	空氣管(IN)	CONNECTION PIPE	0
13	P6262060000	2	襯套	BUSH	0
14	P6262270000	1	進氣管	INLET PIPE	0
15	92214000000		軟管夾	HOSE CLIP	0
16	90190603503	2	六角凸緣螺栓(M6*35L)-鍍G	HEXAGON FLANGE BOLT(M6*35L)	
17	92140600005	2	平墊圈(6.4D*13D*1T)	WASHER (6.4D*13D*1T)	0
18	P6262370000	1	管塞	PLUG,JOINT TUBE	0

E12. 消音器 (SILENCER)



PAI-E12 排氣管(MUFFLER)					
NO.	Part No.	Q'TY	PART NAME	PART NAME	SPECIFICATION
項目	零件號碼	數量	零件中文名稱	零件英文名稱	規格
1	BF2810010002	1	消音器總成BF-125單避震(電噴E3)	muffler assy	0
2	BF2810100000	1	隔熱板	HEAT PROTECTOR	0
3	90050602000	3	十字槽圓頭機器螺釘(M6*20L)	C-R PAN HD MACHINE S	0
4	92140600015	6	平墊圈(耐高 溫)	WASHER(TEMPERATURE-ENDURING	0
5	92140600016	3	平墊圈	PLAIN WASHER	0
6	C2281042000	1	消音器托架	BRACKET,MUFFER	0
7	E92810200001	1	排氣管墊片(非石棉材質)		0
8	92050800000	2	六角蓋形螺帽(長型)	HEXAGON CAP NUT	0
9	92140800000	4	平墊圈(8.4D*17D*1.6T)	PLAIN WASHER	0
10	90190804003	4	六角凸緣螺栓	HEXAGON FLANGE BOLT (M8*40L)	0
11	92110800000	4	彈簧墊圈(8D*14D*2.2T)	SPRING WASHER(8D*14D*2.2T)	0

E13 REAR WHEEL

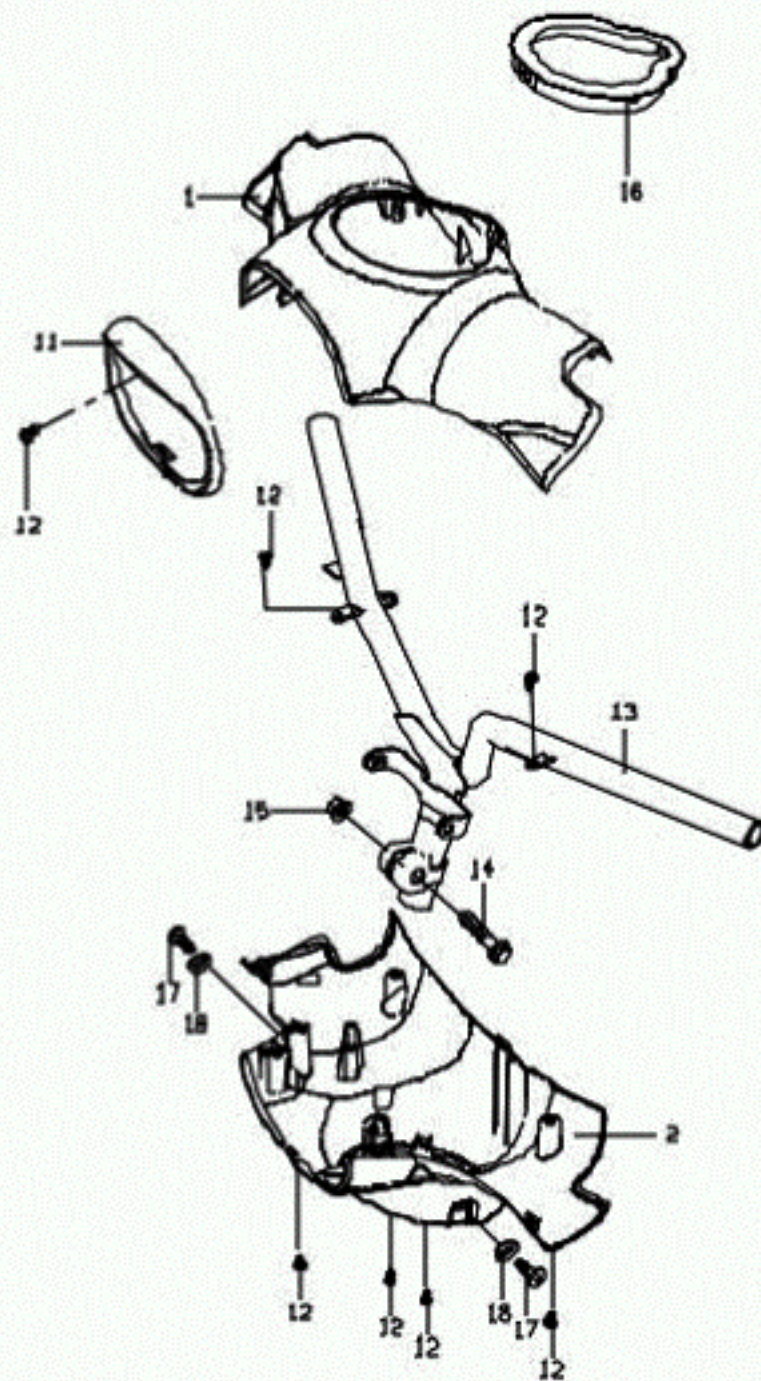
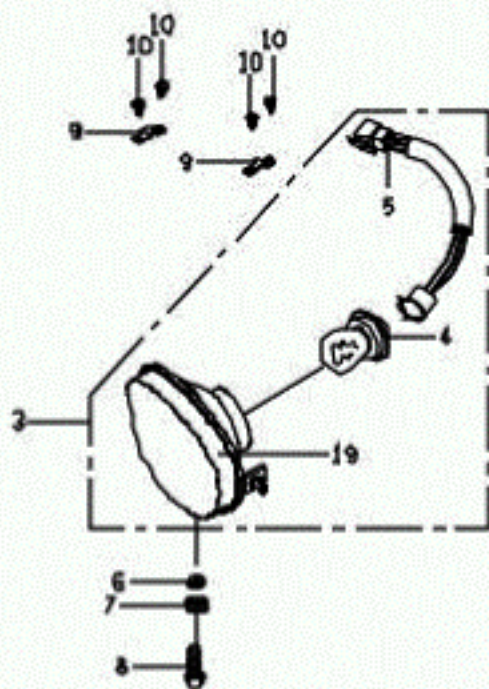


PAI-E13 後輪(REAR WHEEL)					
NO.	Part No.	Q'TY	PART NAME	PART NAME	SPECIFICATION
項目	零件號碼	數量	零件中文名稱	零件英文名稱	規格
1	C2634000650	1	後土除(超黑)	REAR FENDER	0
2	C240G320000	1	輪胎 100/90-10 平胎	RR TYPE ASSY	0
3	92141700001	1	平墊圈	WASHER	0
4	92011600000	1	U型螺帽	U TYPE SPRING NUT	0
5	P140B330000	1	氣門嘴(正新)	VALVE	0
6	C24071066D00	1	後輪圈組合(霧面黑)	REAR WHEEL RIM COMP	BLACK
9	92040800000	5	六角凸緣螺帽(M8)鍍鋅(鉸)白色	HEXAGON FLANGE NUT	0
10	C24074010000	1	煞車蹄片總成	BRAKE SHOE ASSY.	0
11	C14044010000	2	前煞車蹄片組合	BRAKE SHOE COMP	0
12	E1407410000	2	後煞車蹄片彈簧	BRAKE SHOE SPRING	0
13	C24074440000	1	後煞車凸輪	CAM, REAR BRAKE	0
14	C24074700001	1	後煞車臂	ARM, REAR BRAKE	0
15	90020602203	1	六角頭螺栓	HEXAGON BOLT	0
16	95511200000	1	O型環(12.3D*2)	O RING	0
17	90190602002	3	六角凸緣螺栓(M6*20L)	HEXAGON FLANGE BOLT (M6*20L)	0
18	90170803601	5	雙頭螺樁	STUD BOLT	0
19	C240G1107700	1	後輪轂組合(轂式)	Hub Rear Come	0

F1.2

EUBU (MOVABLE MODEL)

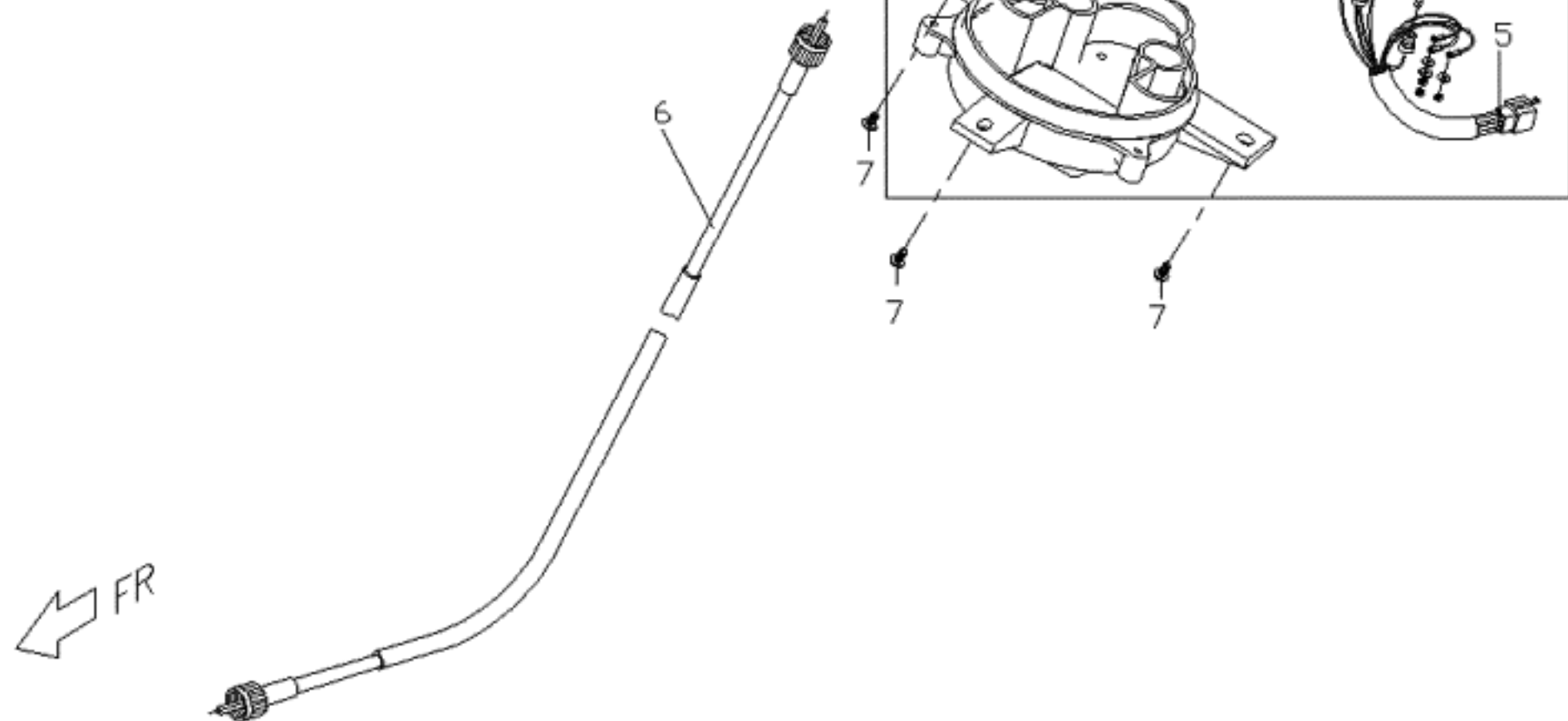
COVER UPPER & LOWER HANDLE BAR.
HEAD LIGHT



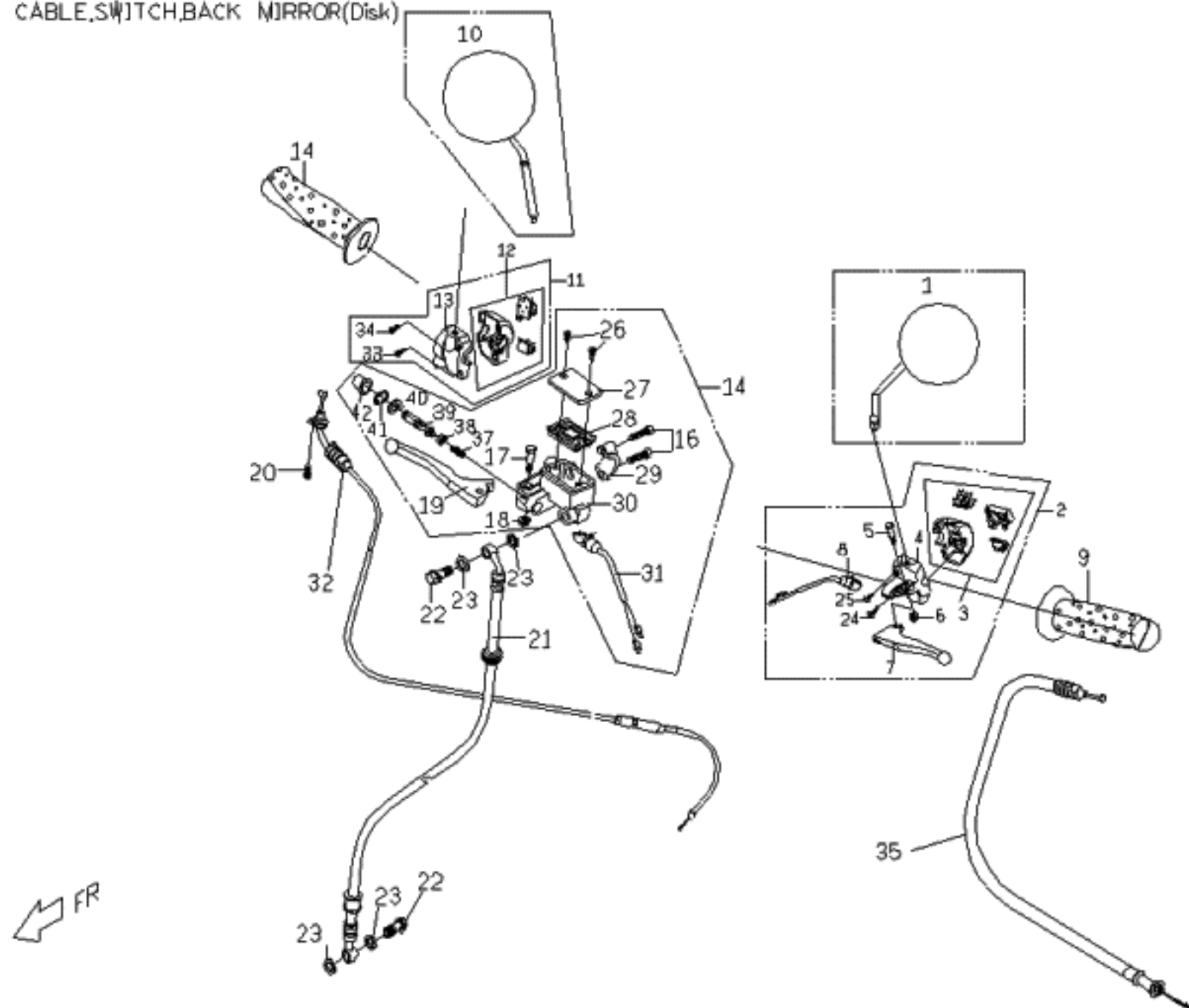
PAI-F01-2 方向把手上下蓋_小頭可動(STEERING COVER (MOVABLE MODEL))					
NO.	Part No.	Q'TY	PART NAME	PART NAME	SPECIFICATION
項目	零件號碼	數量	零件中文名稱	零件英文名稱	規格
1	P5613000690	1	方向把手上蓋(賓士黑)	UPPER COVER,HANDBAR	BLACK
1	P5613000710	1	方向把手上蓋(雪白)	UPPER COVER, HANDLEBAR	WHITE
1	P56130007J0	1	方向把手上蓋(晶鑽銀)	UPPER COVER,HANDBAR	SILVER
2	P56140026500	1	方向把手下蓋(超黑)	LOWER HANDLE COVER	0
3	P5661000000	1	頭燈組合(內銷)	HEAD LIGHT ASSY	0
4	98111235301	1	燈泡(35W/30W)	BULB	0
5	P566A040000	1	電線組	WIRE COMP	0
6	92140500014	1	平墊圈(5.5D*12D*1T)	WASHER (5.5D*12D*1T)	0
7	92130600000	1	齒形墊圈(0.6T)	TEETH TYPE WASHER	0
8	E1613010000	1	調整螺絲	REGULATING SCREW	0
9	P5706010000	2	頭燈壓板	FRONT LIGHT PLATE	0
10	90130301000	4	十字槽圓頭自攻螺釘(M3*10L)	CR ROUND HD TAPPING SCREW(M3	0
11	P5613030000	1	前燈罩	FR. HEAD LIGHT COVER	0
12	90110401200	7	十字槽盤頭自攻螺釘(M4*12L)	CR PAN HD TAPPING SC	0
13	P56120046000	1	把手管總成(E.D)	HANDLE BAR COMP (ED)	0
14	90191004600	1	六角凸緣螺栓	HEXAGON FLANGE BOLT(M10*46L)	0
15	92061000005	1	六角防鬆螺帽(M10*1.25P)-鍍G	HEXAGON FLANGE NUT	0
16	P5613020000	1	碼錶飾蓋	SPEED METER SIDE COVER	0
17	90040601403	2	十字槽盤頭機器螺釘(用完不再買	C-R PAN HD. MACHINE SCREW	0
18	92140600000	2	平墊圈(6.4D*1.0T)	PLAIN WASHER	0
19	P566A060000	1	燈座組合	LAMP SOCKET	0

F2 BUBU
SPEEDOMETER

MOVABLE MODEL



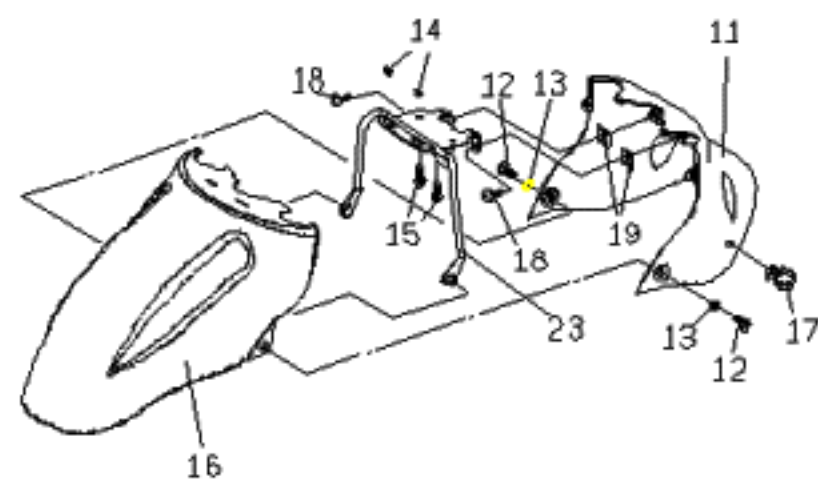
PAI-F02-3 碼錶(可動)(SPEEDOMETER)					
NO.	Part No.	Q'TY	PART NAME	PART NAME	SPECIFICATION
項目	零件號碼	數量	零件中文名稱	零件英文名稱	規格
1	P6561000000B	1	碼錶總成(PA-I)可動	SPEEDMETER ASSY	0
2	P556A010000	1	錶鏡	SPEEDMETER COVER	0
3	P556A030000	1	燈泡(14V/3W)	BULB	0
4	P556A020000	5	燈泡(12/1.7W)	BULB	0
5	P556A040000	1	電線組立	WIRE UNIT	0
6	P6544002000	1	碼錶導線總成(碟式)	SPEEDOMTER CABLE ASSY.	0
7	90110401200	3	十字槽盤頭自攻螺釘(M4*12L)	CR PAN HD TAPPING SC	0



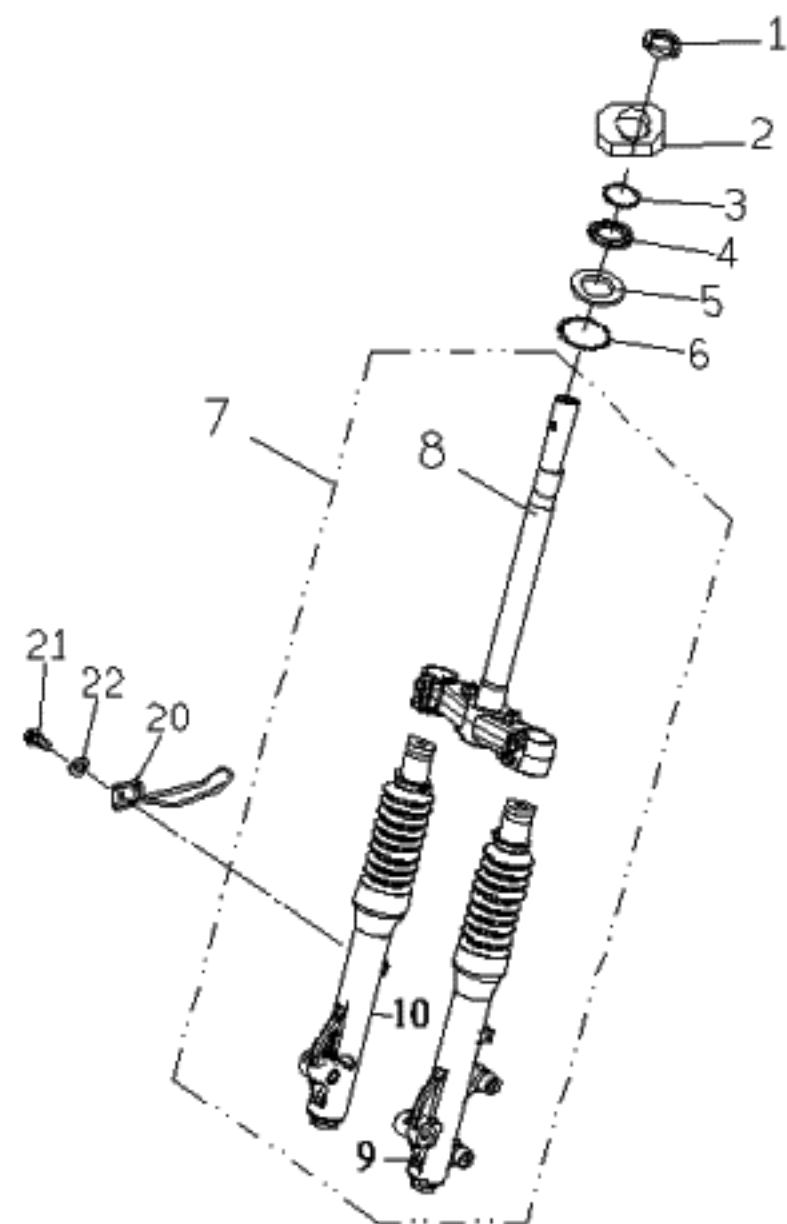
PAI-F03-1 導線-開關(碟煞)(CABLES, SWITCH(DISK BRAKE))					
NO.	Part No.	Q'TY	PART NAME	PART NAME	SPECIFICATION
項目	零件號碼	數量	零件中文名稱	零件英文名稱	規格
1	P561F0100002	1	左後視鏡總成	REAR MIRROR ASSY(LH.)	0
2	P1546003000	1	左把手開關總成	SWITCH ASSY ,LH HANDLEBAR	0
3	P154F410000	1	內夾持板(2)組合	CASE, SWITCH UNDER 2	0
4	P154F020000	1	內夾持板(1)	CASE,SWITCH UNDER 1	0
5	P154F030000	1	螺栓	BOLT	0
6	P154F040000	1	防鬆螺帽	LOCK NUT	0
7	P1543303000	1	左煞車拉桿	LEVER,LH BRAKE	0
8	C2548220000	1	煞車安全開關組合	RR BRK SWITCH COMP	0
9	P05410010000	1	左握把總成(無PGO)	GRIP ASSY,LH	0
10	P561F0200002	1	右後視鏡總成	REAR MIRROR ASSY.(RH.)	0
11	P1548003000	1	右把手開關總成(碟式)	SWITCH ASSY.RH HANDLEBAR	0
12	P154H190000	1	內夾持板(2)組合	CASE,SWITCH UNDER 2 COMP	0
13	P154H020000	1	內夾持板(1)碟式	CASE,SWITCH UNDER 1	0
14	P05420010000	1	右握把總成(無PGO)	GRIP ASSY,RH	0
15	P54030020000	1	前煞車總 泵	MASTER CYLINDER, FR BRAKE	0
16	P140C250000	2	螺栓組成	INNER BOLT	0
17	P140C220000	1	螺栓	BOLT	0
18	P140C230000	1	凸緣螺帽	FLANGE NUT	0
19	P140C191000	1	右手柄	LEVER,RH BRAKE	0
20	90050501202	1	十字槽圓頭機器螺釘-鍍G	CR ROUND HD MACHINE SCREW (M	0

PAI-F03-1 導線-開關(碟煞)(CABLES, SWITCH(DISK BRAKE))					
NO.	Part No.	Q'TY	PART NAME	PART NAME	SPECIFICATION
項目	零件號碼	數量	零件中文名稱	零件英文名稱	規格
21	P6403600000	1	煞車油管總成	FRT BRAKE FLUID HOSE COMP.	0
22	P14038110000	2	煞車油管通油螺栓	JOINT BOLT,BRAKE HOSE	0
23	92141000002	4	墊圈(10D*15D*1.5T)	WASHER(10D*15D*1.5T)	0
24	P154F390000	1	埋頭螺釘	SCREW,PAN HEAD	0
25	P154F400000	1	埋頭螺釘	SCREW,PAN HEAD	0
26	P140C130000	2	螺絲	SCREW	0
27	P140C120000	1	油杯蓋	CAP,RESERVOIR	0
28	P140C110000	1	皮膜	DIAPHRAGM,RESERVOIR	0
29	P140C240000	1	夾持具	BRACKET,MASTER CYLINDER	0
31	P140C180000	1	開關組成	SWITCH COMP	0
32	P6544601000F	1	加油導線總成	CABLE ASSY,THROT	0
33	P154H180000	1	十字槽圓頭螺栓	C-R ROUND HD SCREW	0
34	P154H170000	1	十字槽圓頭螺栓	C-R ROUND HD SCREW	0
35	P65444020000	1	後煞車導線總成	CABLE ASSY. RR BRAKE	0
37	P140C050000	1		SPRING	
38	P140C030000	1		P SEAL	
39	P140C020000	1		PISTON	
40	P140C040000	1		S SEAL	
41	P140C070000	1		CLIP	
42	P140C080000	1		DUST PROOF ASSY	

F4 FRONT FORK

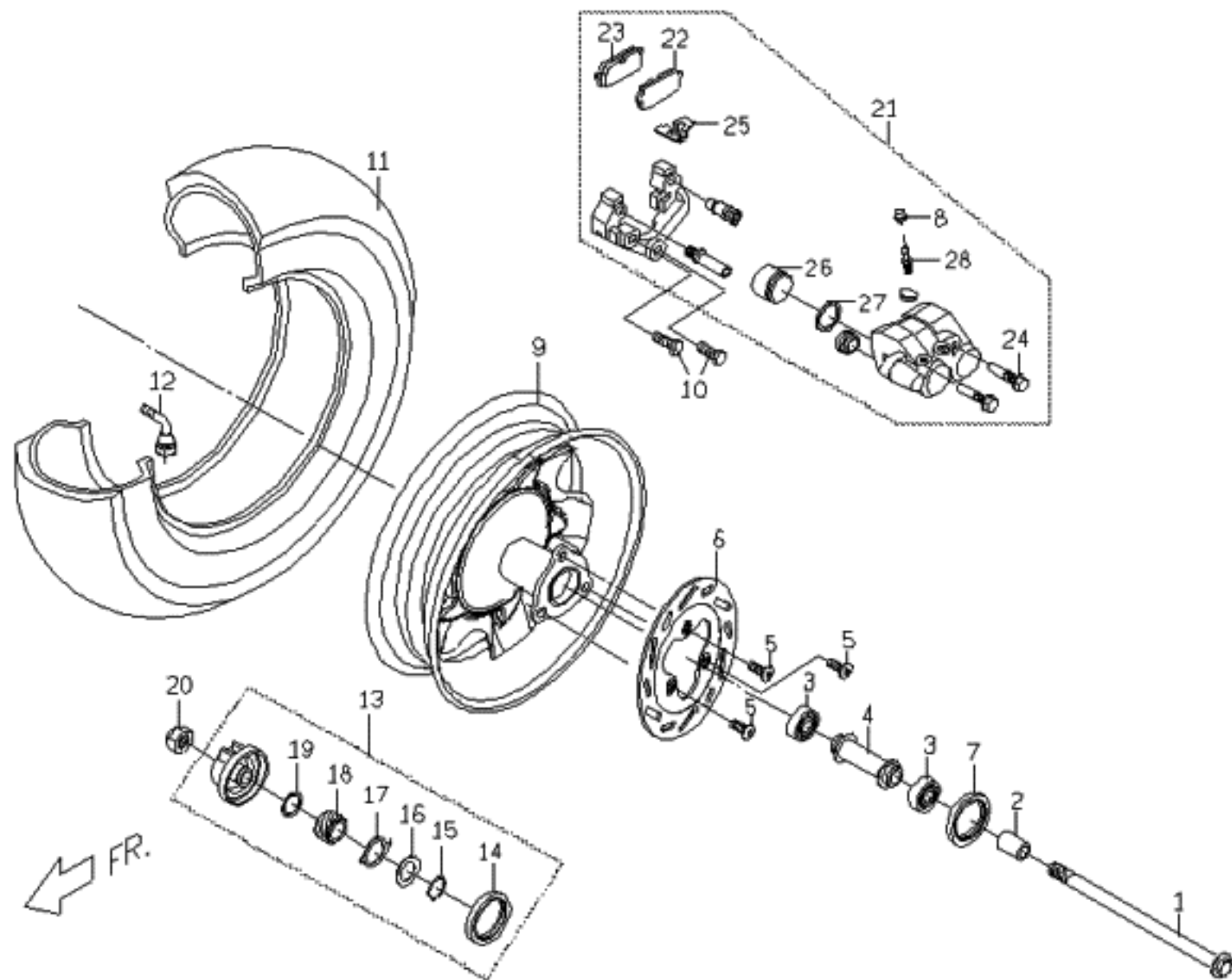


FR.



PAI-F04-2 前土除(斜板-碟煞)(FRONT FORK)					
NO.	Part No.	Q'TY	PART NAME	PART NAME	SPECIFICATION
項目	零件號碼	數量	零件中文名稱	零件英文名稱	規格
1	P1443040000	1	轉向軸防鬆螺帽	STEERING SHAFT LOCK NUT	0
2	P6444051000	1	上座環形螺帽	UPPER RING NUT	0
3	99010500000	22	鋼珠(3/16)	STEEL BALLS (3/16")	0
4	P1443020000	1	軸承外座	UPPER BEARING CAGE	0
5	C1443011000	1	軸承底座	LOWER BEARING CAGE	0
6	99010600000	19	鋼珠(1/4")	BEARING BALL(1/4")	0
7	P64430026D00	1	前叉總成(碟式)霧面黑	FORK ASSY.FRT	BLACK
8	P644C200000	1	下三角架總成	UNDER BRACKET COMP	0
9	P644C2106D00	1	左外筒總成	LH OUTER TUBE ASSY	
10	P644C2206D00	1	右外筒總成	RH OUTER TUBE ASSY	
11	C26326026500	1	前土除,後段(超黑)	FR. FENDER,RR. SECTION	0
12	90150501601	2	十字槽扁圓頭自攻螺釘(M5*16L)	CR TRUSS HD TAPPING SCREW(M5	0
13	90040601403	2	十字槽盤頭機器螺釘(用完不再買	C-R PAN HD. MACHINE SCREW	0
14	C2632020000	2	橡膠環	RUBBER RING	0
15	90190601200	2	六角凸緣螺栓(M6*1.0P*12L)	HEXAGON FLANGE BOLT(M6*1.0P*1	0
16	P6632000690	1	前土除,前段 (賓士黑)	FRT FENDER,FRT SECTION	BLACK
16	P6632000710	1	前土除,前段 (雪白色)	FRT FENDER,FRT SECTION	WHITE
16	P66320007J0	1	前土除,前段 (晶鑽銀)	FRT FENDER,FRT SECTION	SILVER
17	92362328000	1	扣具	CABLE CLIP	0
18	92140600017	2	平墊圈	WASHER	0
19	92370500003	2	U型彈簧螺帽(M5)	U TYPE SPRING NUT	0
20	C2544020000	1	碼錶導線束圈(右)	SPEEDOMETER CABLE CLIP COMP.	0
21	90190601200	1	六角凸緣螺栓(M6*1.0P*12L)	HEXAGON FLANGE BOLT(M6*1.0P*1	0
22	92110600000	1	彈簧墊圈(6D*1.8T)	SPRING WASHER(6D*1.8T)	0
23	C2632010000	1	前土除固定座(E.D處理)	FRONT FENDER FIXING PLATE	0

F5 前輪圈



PAI-F05 前輪(碟煞)(FRONT WHEEL-(DISK BRAKE))

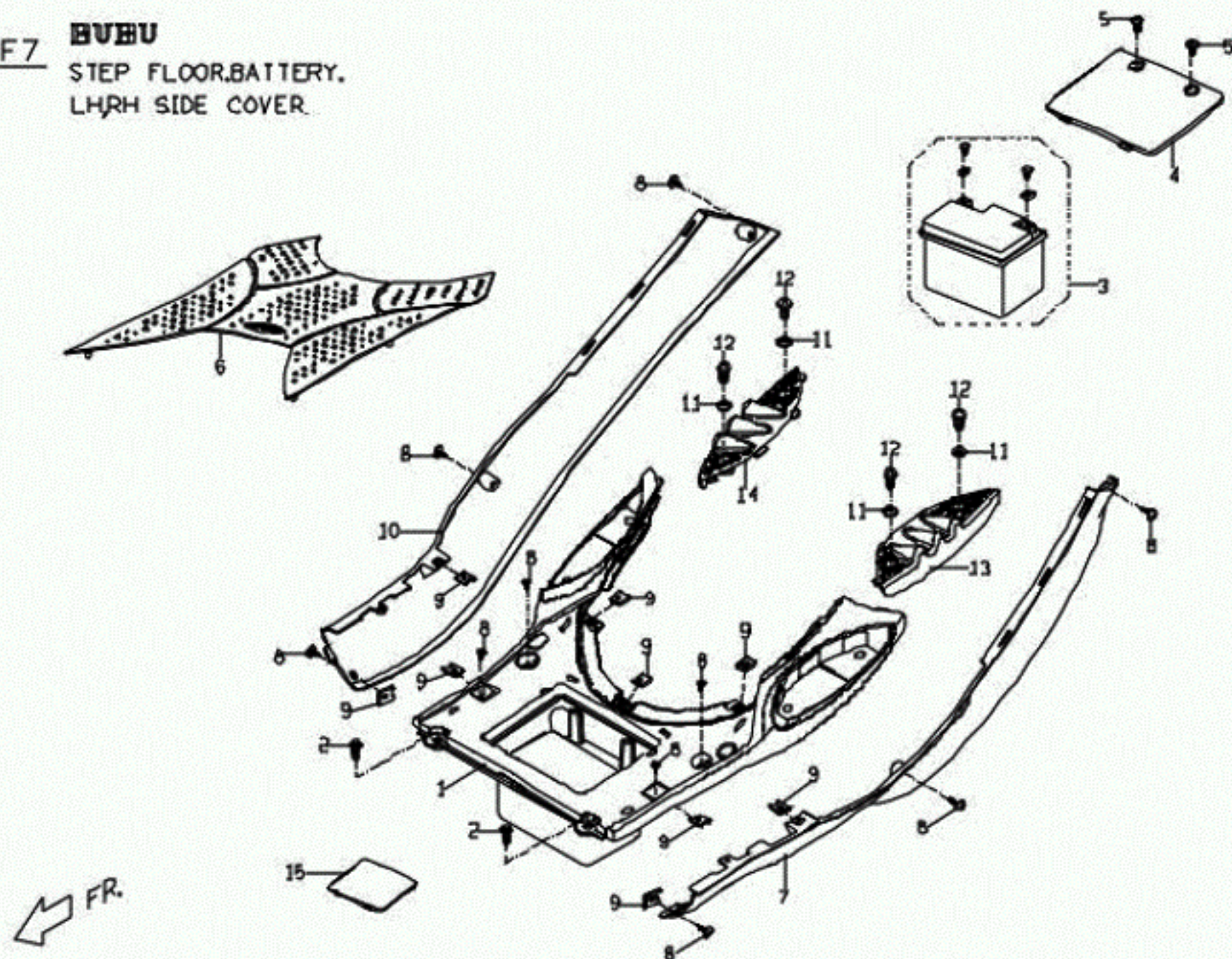
NO. 項目	Part No. 零件號碼	Q'TY 數量	PART NAME 零件中文名稱	PART NAME 零件英文名稱	SPECIFICATION 規格
1	C2402500000	1	前輪軸	AXLE FRT WHEEL	0
2	P14010100001	1	間隔環	SPACER	0
3	96520620100	2	單封滾珠軸承(6201U)	ONE SHIELD BALL BEARING	0
4	P5402400000	1	間隔環組合	SPACER ASSY.	0
5	C1403510000	3	前煞車盤螺絲(M8*1.25P*24L)	SCREW, FR BRAKE DISK(M8*1.25P*24L)	0
6	C240C5020002	1	前煞車圓盤(金黃色)(190MM)	BRAKE DISC,FR(190MM)	0
7	95572235700	1	TC型油封	OIL SEAL, TC TYPE	0
8	C140C160000	1	放氣帽	EXHAUSED NUT	0
9	C24011076D00	1	前輪圈組合(碟式)霧面黑	FR WHEEL ASSY	BLACK
10	90190804002	2	六角凸緣螺栓	HEXAGON FLANGE BOLT (M8*40L)	0
11	C240B320000	1	輪胎 3.50-10 平胎	WHEEL TIRE 3.50-10 ON ROAD	0
12	P140B330000	1	氣門嘴(正新)	VALVE	0
13	C25660040000	1	碼錶齒輪總成	METER GEAR ASSY	0
14	95574052600	1	TC油封(52D*6T)	OIL SEAL	0
15	92171800000	1	C型扣環(18)	C CLIP	0
16	92141900001	1	平墊圈(30D*1T)	PLAIN WASHER	0
17	P1566050000	1	傳動片	PAD	0
18	P0566040000	1	速度錶齒輪	SPEEDMETER GEAR	0
19	92141900002	1	平墊圈(24D*1.2T)	PLAIN WASHER	0
20	92061200001	1	防鬆螺帽	LOCK NUT	0
21	C2403303000	1	前煞車夾(EL329紅)	CALIPER, FR BRAKE	0
22·23	C240C2300000	1	煞車片組成(內外)	brakes-thin comp	0
24	C140C141000	2		SCREW	
25	C140C330000	1		YOKE SPRING	
26	C140C040000	1		DUST PROOF	
27	C140C030000	1		OIL SEAL	
28	C140C060000	1		BREED SCREW	

PAI-F06-2 擋風板(可動)(WINDSHIELD-(MOVABLE MODEL))					
NO.	Part No.	Q'TY	PART NAME	PART NAME	SPECIFICATION
項目	零件號碼	數量	零件中文名稱	零件英文名稱	規格
1	P66210026900	1	擋風板(賓士黑)	WINDSHIELD	BLACK
1	P66210027100	1	擋風板(雪白色)	WINDSHIELD	WHITE
1	P66210027J00	1	擋風板(晶鑽銀)	WINDSHIELD	SILVER
2	P56230316501	1	前內蓋上段(超黑)裝電源供應器用	FRONT INNER COVER, UPPER	0
3	P56230416500	1	前內蓋下段(超黑)	FRONT INNER COVER LOWER	0
4	P5701211650	1	前置物掛勾(超黑)	HELMAT HOOK,FR.	0
5	90040601601	1	十字槽盤頭機器螺釘(M6*16L)	CR PAN HD MACHINE SCREW(M6*16	0
6	P56230116500	1	車身號碼蓋(超黑)	COVER, VIN	0
7	P566C0100002	1	前左方向燈組合	LH SIGNAL LAMP,FR	0
7	P566C0100003	1	前左方向燈組合(燻黑+橘色燈泡)	SIGNAL LAMP COM.FR LH	0
8	90110401200	16	十字槽盤頭自攻螺釘(M4*12L)	CR PAN HD TAPPING SC	0
9	P566C0200002	1	燈罩	LAMP SHADE	0
11	98211210990	2	燈泡(10W,橙色)	BULB(10W)	0
12	P566C050000	4	十字圓頭自攻螺釘	CR ROUND TAPPING SCREW	0
13	C2621010000	1	擋風板飾板(可動)電鍍	PANEL, WINDSHIELD	0
14	P566D0100002	1	前右方向燈組合	RH SIGNAL LAMP,FR	0
14	P566D0100003	1	前右方向燈組合(燻黑+橘色燈泡)	SIGNAL LAMP COM.FR RH	0
15	P566D0200002	1	燈罩	LAMP SHADE	0
17	E1621010000	1	帶墊圈盤頭機器螺釘(M6*1P*10L)	PAN HD. MACHINE SCREW WITH WA	0
18	P5626013690	1	前下蓋(賓士黑)	COVER, FRT LOWER	BLACK
18	P5626013710	1	前下蓋(雪白)	FR LOWER COVER	WHITE
18	P56260137J0	1	前下蓋(晶鑽銀)	LOWER COVER,FRT	SILVER
19	90040601403	2	十字槽盤頭機器螺釘(用完不再買	C-R PAN HD. MACHINE SCREW	0
20	P56230216500	1	前內蓋飾蓋(超黑)	PANEL, FR INNER COVER	0
21	E1701040000	4	螺旋鉚釘(塑膠螺釘)	SPIRAL RIVET	0
22	90130501401	6	十字槽圓頭自攻螺釘(M5*14L)-鍍G	C-R RECESS PAN HD. TAPPING	0
23	92140600005	2	平墊圈(6.4D*13D*1T)	WASHER (6.4D*13D*1T)	0

F7

BVBU

STEP FLOOR.BATTERY.
LHRH SIDE COVER.

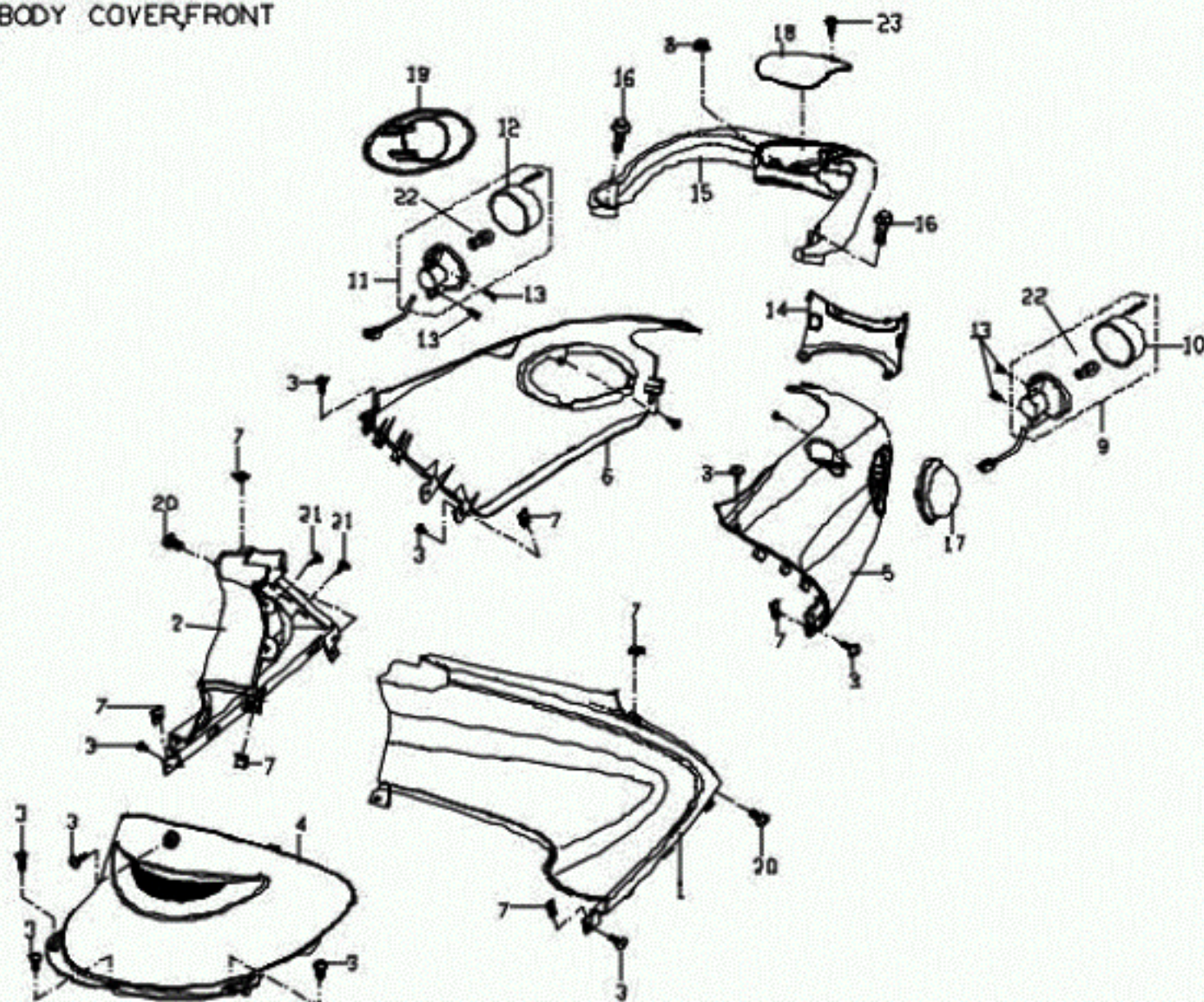


PAI-F07 腳踏板(STEPFLOOR)					
NO.	Part No.	Q'TY	PART NAME	PART NAME	SPECIFICATION
項目	零件號碼	數量	零件中文名稱	零件英文名稱	規格
1	P66240036500	1	腳踏板(超黑)	STEP FLOOR	0
2	90200602500	4	帶墊圈螺栓	SCREW WITH WASHER	0
3	C2583000000	1	電瓶(湯淺) 7A	BATTERY	0
4	C26240326500	1	電瓶蓋(超黑)	BATTERY COVER	0
5	90130501401	2	十字槽圓頭自攻螺釘(M5*14L)-鍍G	C-R RECESS PAN HD. TAPPING	0
6	P6624501000	1	腳踏板橡皮墊	RUBBER CUSHION,STEP PLATE	0
7	P662F3006900	1	左邊飾條(側腳柱安全開關) 69黑	LH SIDE COVER	BLACK
7	P662F3007100	1	左邊飾條(側腳柱安全開關) 71白	LH SIDE COVER	WHITE
8	90150501602	10	十字槽扁圓頭自攻螺釘-鍍G	C-R RECESS PAN HD. TAPPING	0
9	92370500003	9	U型彈簧螺帽(M5)	U TYPE SPRING NUT	0
10	P6626500690	1	右邊飾條(賓士黑)	RH SIDE COVER	BLACK
10	P6626500710	1	右邊飾條(雪白色)	RH SIDE COVER	WHITE
10	P66265007J0	1	右邊飾條(晶鑽銀)	PANEL STRIP,RH.	SILVER
11	92140600018	4	平墊圈	WASHER	0
12	90040602200	4	十字槽盤頭機器螺釘	CR PAN HD MACHINE SCREW(M6*22	0
13	C26240217701	1	腳踏左後踏板 ABS (銀灰)	STEP PLATE,LH REAR	0
14	C262D0217701	1	腳踏右後踏板 ABS (銀灰)	STEP PLATE,RH REAR	0

F8

BUBU

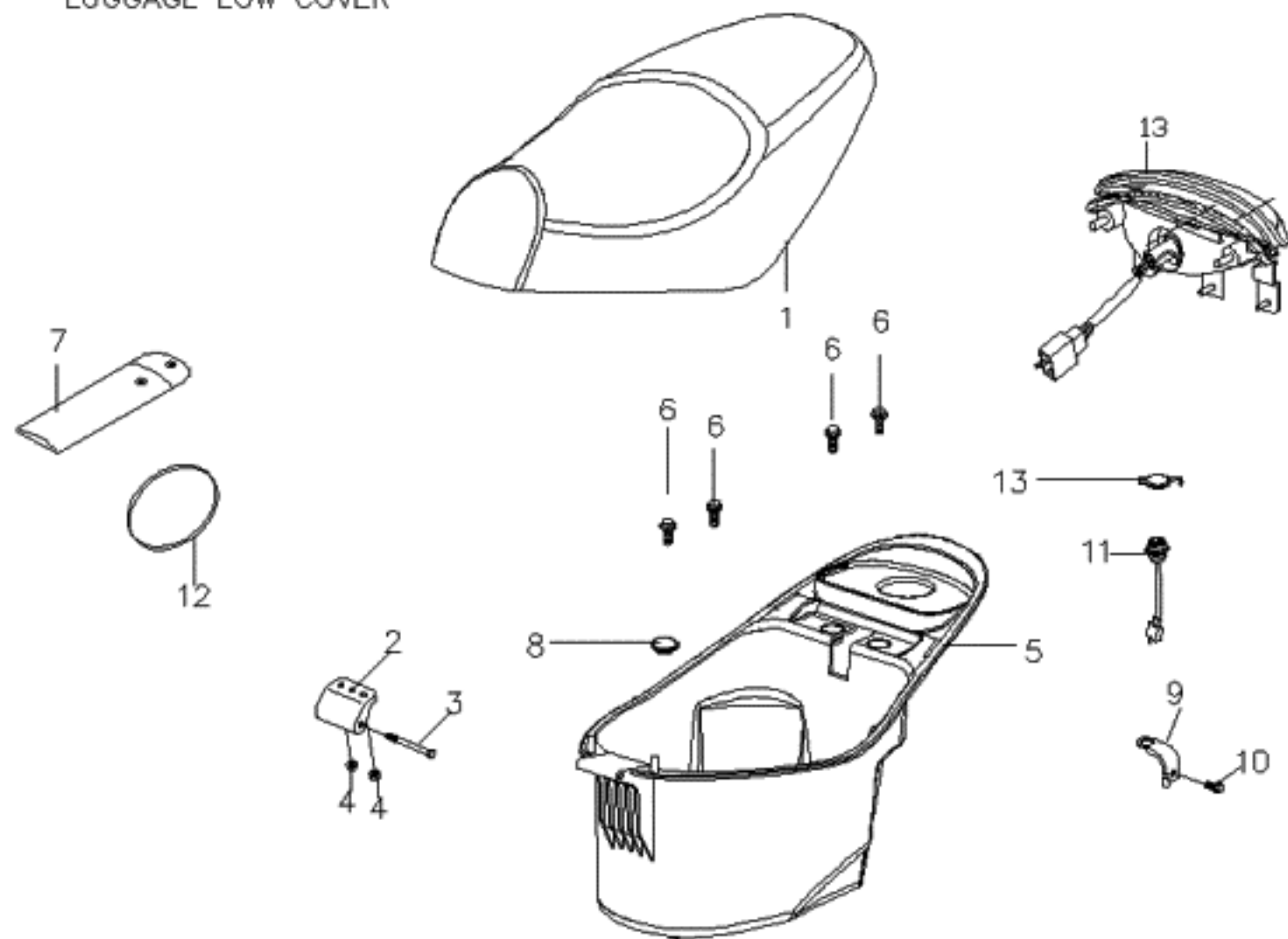
BODY COVER BODY COVER FRONT
RR LUGGAGE



PAI-F08 車身蓋(BODY COVER)					
NO.	Part No.	Q'TY	PART NAME	PART NAME	SPECIFICATION
項目	零件號碼	數量	零件中文名稱	零件英文名稱	規格
1	P662E010650	1	左前胸蓋(超黑)	BODY COVER, LH FRONT	0
2	P662E020650	1	右前胸蓋(超黑)	BODY COVER, RH FRONT	0
3	90150501602	11	十字槽扁圓頭自攻螺釘-鍍G	C-R RECESS PAN HD. TAPPING	0
4	P66250116500	1	中間蓋(超黑)	MIDDLE COVER	0
5	P6625301690	1	左車身蓋(賓士黑)	LH BODY COVER	BLACK
5	P6625301710	1	左車身蓋(雪白色)	LH BODY COVER	WHITE
5	P66253017J0	1	左車身蓋(晶鑽銀)	LH BODY COVER	SILVER
6	P6625501690	1	右車身蓋(賓士黑)	RH BODY COVER	BLACK
6	P6625501710	1	右車身蓋(雪白色)	RH BODY COVER	WHITE
6	P66255017J0	1	右車身蓋(晶鑽銀)	RH BODY COVER	SILVER
7	92370500003	7	U型彈簧螺帽(M5)	U TYPE SPRING NUT	0
8	92040800000	1	六角凸緣螺帽(M8)鍍鎳(鉅)白色	HEXAGON FLANGE NUT	0
9	P566G0110002	1	左後方向燈組合	SIGNAL LAMP,LR	0
10	P566G0200002	1	方向燈蓋	SIGNAL LAMP COVER	0
11	P566H0110002	1	右後方向燈組合	RH/REAR SIGNAL LAMP COMP.	0
12	P566H0200002	1	方向燈蓋	SIGNAL LAMP COVER	0
13	90110401200	4	十字槽盤頭自攻螺釘(M4*12L)	CR PAN HD TAPPING SC	0
14	P6625700690	1	後蓋 (賓士黑)	REAR COVER	BLACK
14	P6625700710	1	後蓋 (雪白色)	REAR COVER	WHITE
14	P66257007J0	1	後蓋 (晶鑽銀)	REAR COVER	SILVER

PAI-F08 車身蓋(BODY COVER)					
NO.	Part No.	Q'TY	PART NAME	PART NAME	SPECIFICATION
項目	零件號碼	數量	零件中文名稱	零件英文名稱	規格
15	P6676000690	1	後行李架(賓士黑)	LUGGAGE SHELF,RR	BLACK
15	P6676000710	1	後行李架(雪白色)	RR LUGGAGE BRACKET	WHITE
15	P66760007J0	1	後行李架(晶鑽銀)	RR LUGGAGE BRACKET	SILVER
16	90190802000	2	六角凸緣螺栓(M8*20L)	HEXAGON FLANGE BOLT(M8*20L)	0
17	P66256020000	1	左後方向燈飾蓋	rear turn signal,inner cover(lh)	0
18	P6676010000	1	後行李架飾蓋	RR LUGGAGE BRACKET COVER	0
19	P6625F020000	1	右後方向燈飾蓋	rear turn signal,inner cover (rh)	0
20	90040601403	2	十字槽盤頭機器螺釘(用完不再買	C-R PAN HD. MACHINE SCREW	0
21	90130501401	2	十字槽圓頭自攻螺釘(M5*14L)-鍍G	C-R RECESS PAN HD. TAPPING	0
22	98211210990	2	燈泡(10W,橙色)	BULB(10W)	0
23	90110401200	1	十字槽盤頭自攻螺釘(M4*12L)	CR PAN HD TAPPING SC	0

F9 BUBU-EFI
SEAT.LUGGAGE.TOOL KIT.
LUGGAGE LOW COVER

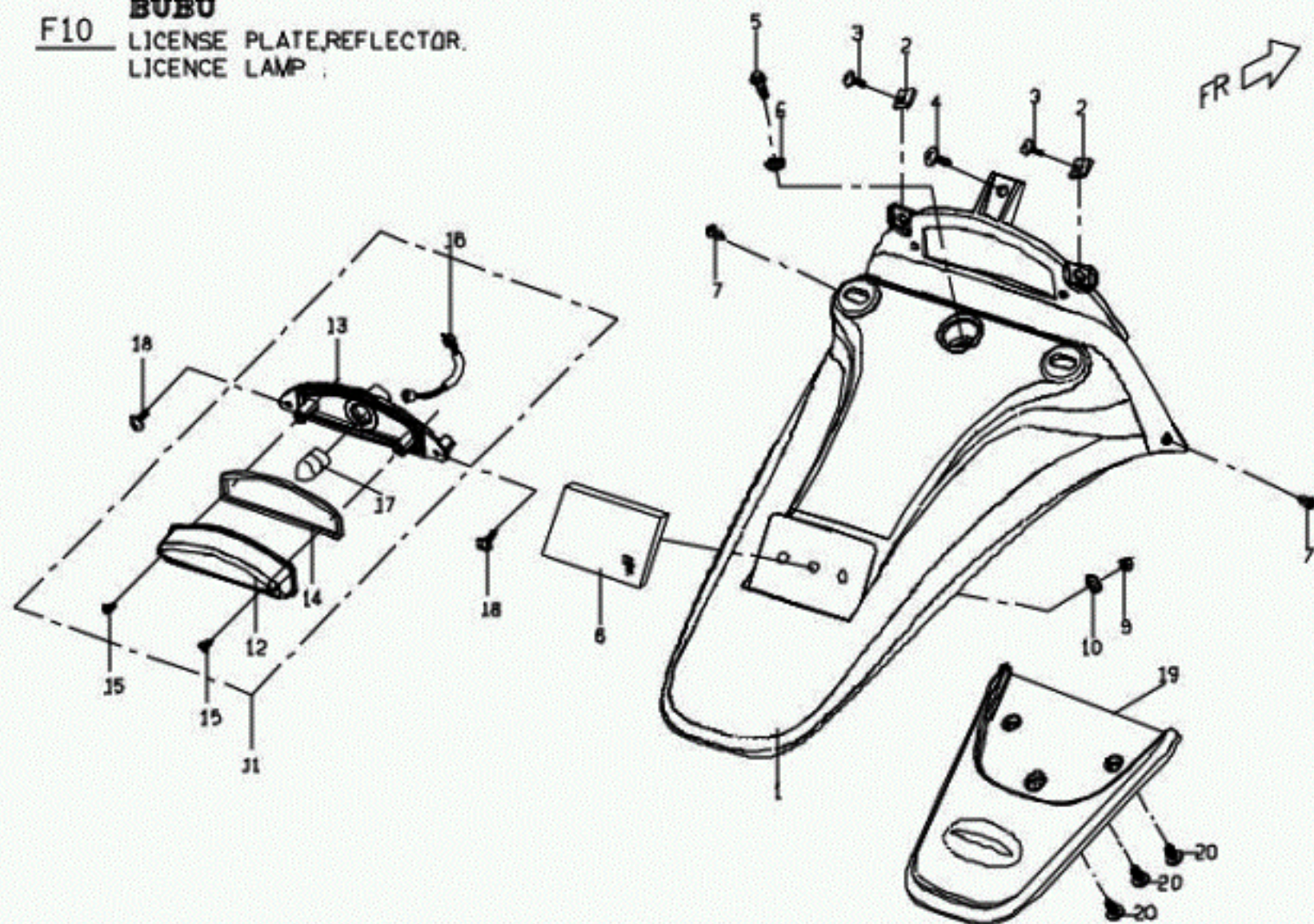


PAI-F09 座墊-置物箱(SEAT, LUGGAGE COMP)					
NO.	Part No.	Q'TY	PART NAME	PART NAME	SPECIFICATION
項目	零件號碼	數量	零件中文名稱	零件英文名稱	規格
1	P66710000002	1	座墊總成(日本專用) PGO	SEAT ASSY	0
2	C1681060000	1	前取付	BRACKET, LUGGAGE	0
3	C1681070000	1	特殊螺栓	SPECIAL BOLT	0
4	92040600000	2	六角凸緣螺帽(M6*1.0P)	HEXAGON FLANGE NUT (M6*1.0P)	0
5	P6681000000F	1	置物箱總成		include #12, #13,#14
6	90190601500	4	六角凸緣螺栓(M6*15L)	HEXAGON FLANGE BOLT (M6*15L)	0
7	P6706540000	1	工具包總成	TOOL SET	0
8	ES6810510000	1	橡膠塞	RUBBER PLUG	0
9	M2706010000	1	診斷接頭固定板	FIXED PLATE, DIAGNOSE JOIN	0
10	90150400800	2	十字槽扁圓頭自攻螺釘	CR TRUSS HD TAPPING SCREW(M4	0
11	ES581710000	1	診斷接頭	DIAGNOSE ADAPTOR	0
12	P6701030000	1	工具包束帶	TOOL SET CLIP	0
13	P66660000000	1	後燈總成(LED版-DOT/ECE)	REAR LAMP ASSY.RH	LED

F10

BUBU

LICENSE PLATE REFLECTOR.
LICENCE LAMP

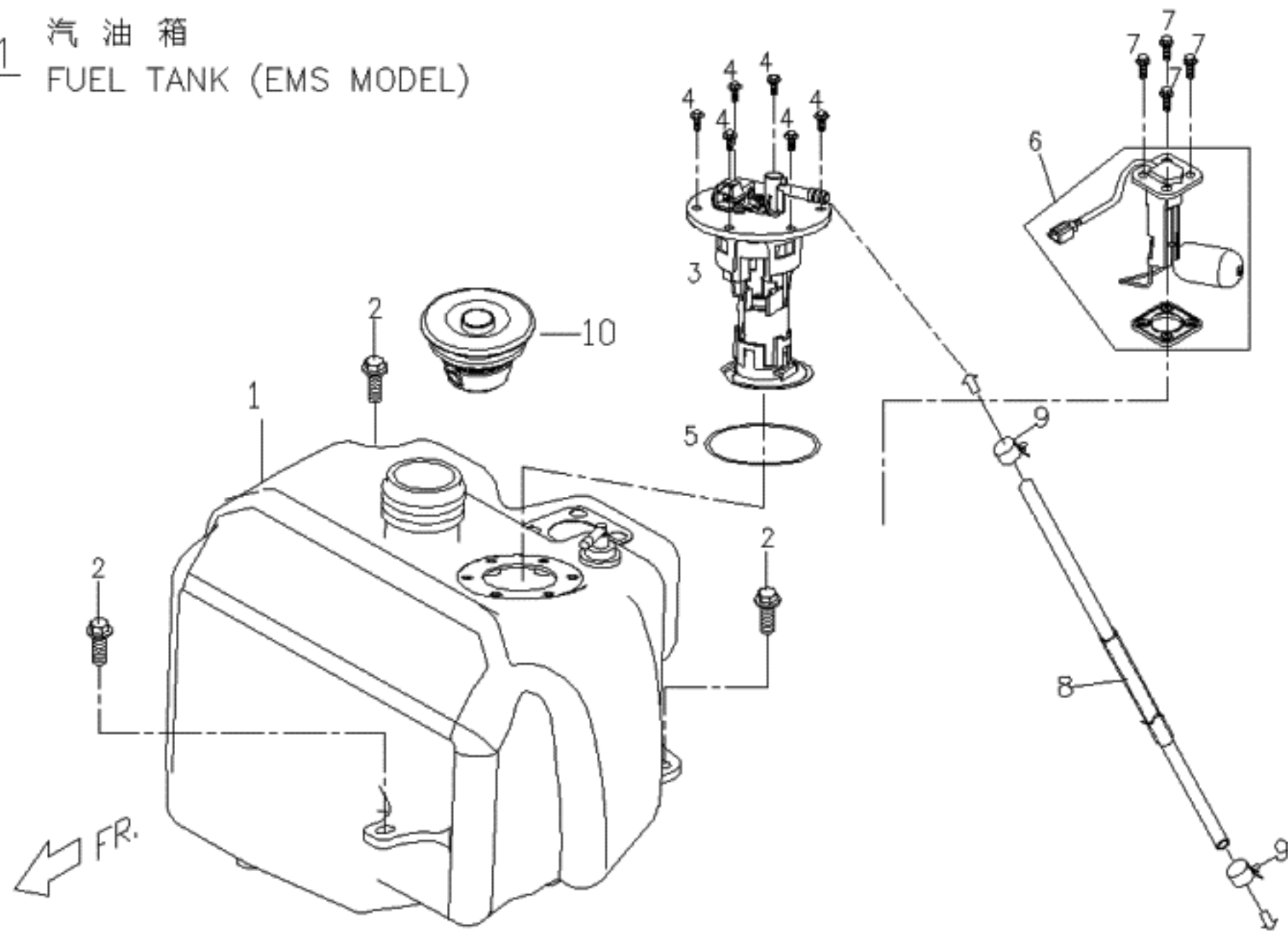


PAI-F10 牌照板-牌照燈(LICENCE PLATE, LAMP)					
NO.	Part No.	Q'TY	PART NAME	PART NAME	SPECIFICATION
項目	零件號碼	數量	零件中文名稱	零件英文名稱	規格
1	P56360046500	1	牌照板(超黑)	LICENSE PLATE	0
2	92370500003	2	U型彈簧螺帽(M5)	U TYPE SPRING NUT	0
3	90150501601	2	十字槽扁圓頭自攻螺釘(M5*16L)	CR TRUSS HD TAPPING SCREW(M5	0
4	90130501401	1	十字槽圓頭自攻螺釘(M5*14L)-鍍G	C-R RECESS PAN HD. TAPPING	0
5	90040601403	1	十字槽盤頭機器螺釘(用完不再買	C-R PAN HD. MACHINE SCREW	0
6	92140600005	1	平墊圈(6.4D*13D*1T)	WASHER (6.4D*13D*1T)	0
7	E1701040000	2	螺旋鉚釘 (塑膠螺釘)	SPIRAL RIVET	0
8	P56690010000	1	反光片	REFLECTOR REAR ASSY	0
9	92020500000	1	六角螺帽(M5*0.8P)	HEXAGON NUT (M5*0.8P)	0
10	92140500014	1	平墊圈(5.5D*12D*1T)	WASHER (5.5D*12D*1T)	0
11	P5666900000	1	牌照燈組合	LICENCE LAMP ASSY.	0
12	P566F910000	1	燈殼	LEN, LICENCE LIGHT	0
13	P566F920000	1	底座	SOCKET	0
14	P566F930000	1	迫緊		0
15	P566F940000	1	自攻螺絲	TAPPING SCREW	0
16	P566F950000	1	電線組	WIRE SET	0
17	P566F960000	1	燈泡(12V/5W)	BULB.LICENCE LIGHT	0
18	90110401200	1	十字槽盤頭自攻螺釘(M4*12L)	CR PAN HD TAPPING SC	0
19	P6636010650	1	牌照板下段(超黑)	LOWER SECTION,LICENSE PLATE	0
20	90110401200	3	十字槽盤頭自攻螺釘(M4*12L)	CR PAN HD TAPPING SC	0

F11

汽油箱

FUEL TANK (EMS MODEL)

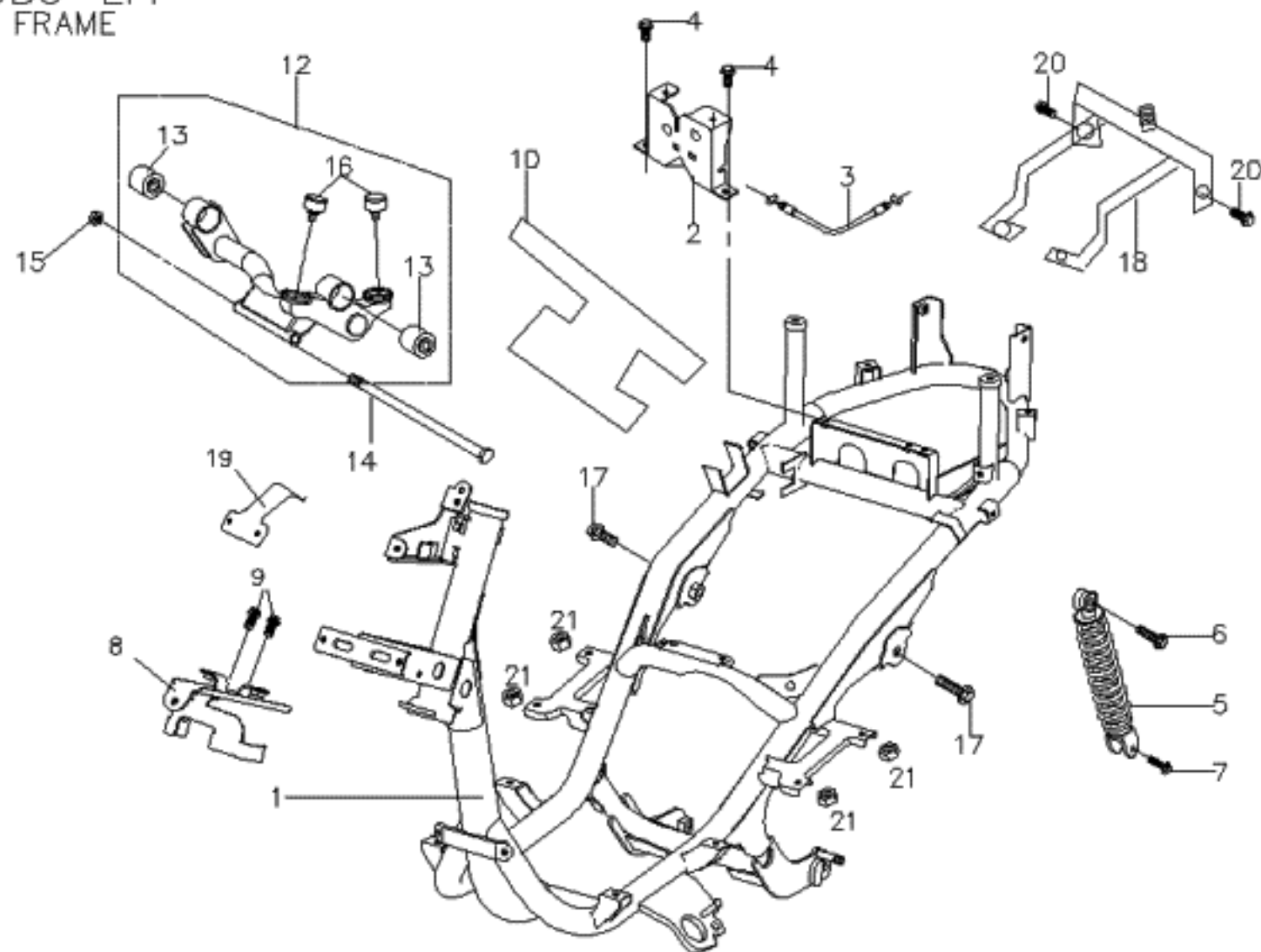


噴油嘴帽蓋接頭
TO CAP OF NOZZLE

PAI-F11 汽油箱(PAi-125)(FUEL TANK(PLASTIC TANK))					
NO.	Part No.	Q'TY	PART NAME	PART NAME	SPECIFICATION
項目	零件號碼	數量	零件中文名稱	零件英文名稱	規格
1	P652A501000F	1	汽油箱(無EEC)	FUEL TANK	0
2	90190601502	3	六角凸緣螺栓(M6*15L)(鍍墨綠)	HEXAGON FLANGE BOLT(M6*15L)	0
3	P6521800000F	1	汽油泵總成(電噴版)	FUEL PUMP COMP	0
4	90200501203	6	六角凸緣螺栓	HEXAGON FLANGE BOLT	0
5	95516700000	1	O形環	O RING	0
6	P6521700000F	1	汽油量計組合	GAUGE COMP,FUEL	0
7	90180501600	4	六角凸緣螺栓	HEXAGON FLANGE BOLT	0
8	P6526011000F	1	高壓油管	OIL PIPE	ECR-C
9	ES706010000	2	管束		0
10	ES5213010001	1	汽油箱蓋組合(外銷)	FUEL TANK COVER COMP	0

F12 BUBU-EFI

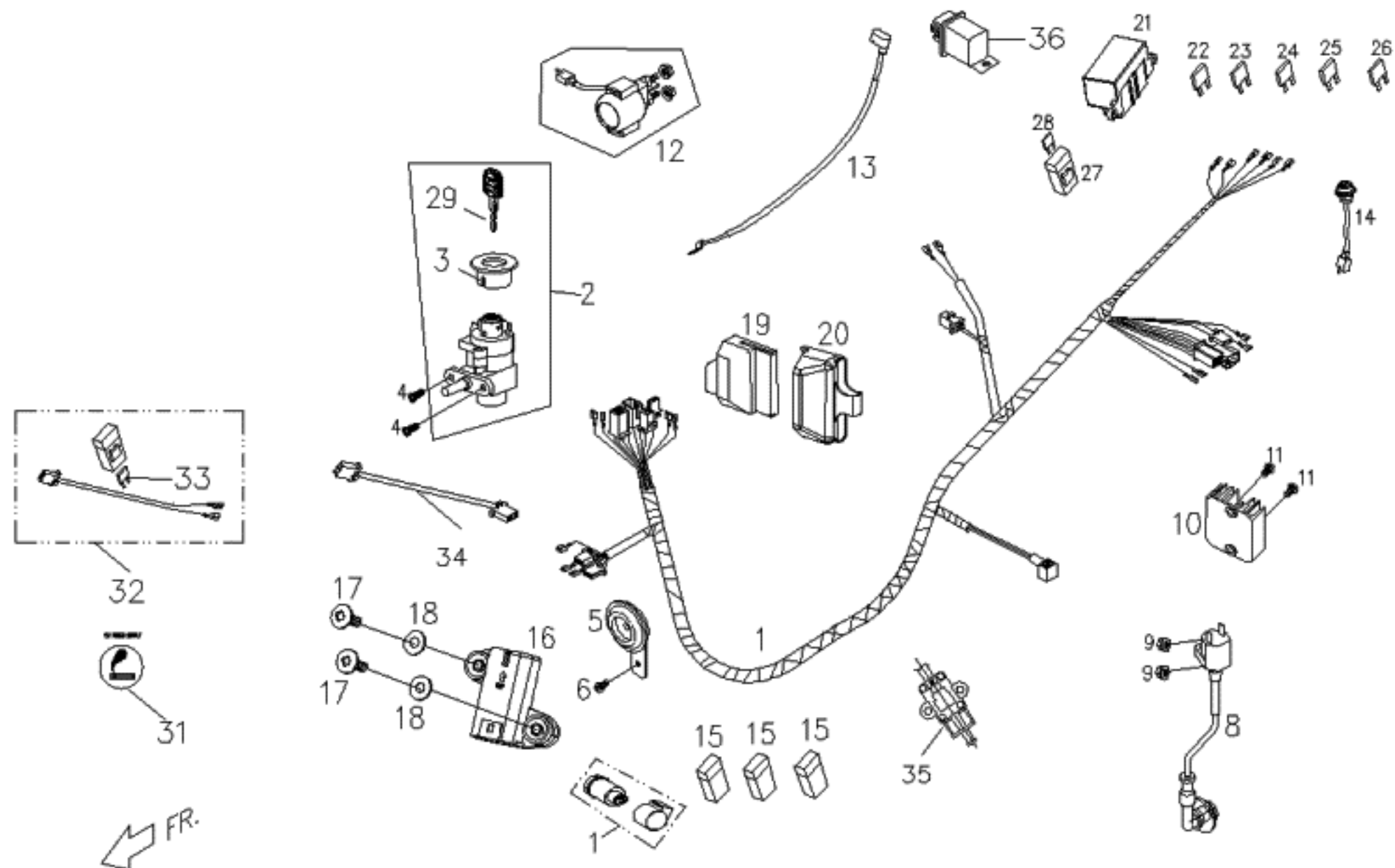
車台 FRAME



FR.

PAI-F12 車台 (PAI-125)(FRAME)					
NO.	Part No.	Q'TY	PART NAME	PART NAME	SPECIFICATION
項目	零件號碼	數量	零件中文名稱	零件英文名稱	規格
1	P642A000600F	1	車架總成(E.D)側腳柱安全開關	FRAME ASSY	0
2	P5671300000	1	座墊鎖座組合	SEAT LOCK ASSY	0
3	P5671121000	1	座墊鎖拉桿線	SEATLOCK LEVER ROPE	0
4	90190601502	2	六角凸緣螺栓(M6*15L)(鍍墨綠)	HEXAGON FLANGE BOLT(M6*15L)	0
5	P6481001000F	1	後緩衝器總成(大彈簧黑色)	CUSHION ASSY	0
6	90191004006	1	六角凸緣螺栓(M10*1.25P*40L)G	HEXAGON FLANGE BOLT (M10*1.25	0
7	90190803201	1	六角凸緣螺栓(M8*32L)	HEXAGON FLANGE BOLT(0
8	BF7060300000	1	傾倒開關固定板	TOPPLE SWITCH FIXED PLATE	0
9	90150501601	2	十字槽扁圓頭自攻螺釘(M5*16L)	CR TRUSS HD TAPPING SCREW(M5	0
10	P6701020000	1	防水護墊	WATERPROOF CUSHION	0
11	P64260200005	1	車輛識別號碼牌(一般) PA-125	VEHICLE ID NO PLATE	0
12	P6486000000F	1	引擎吊架本體熔接組合	ENGINE HANGER COMP	0
13	C1486010000	2	緩衝襯套	PACKING, CUSHION	0
14	90191018001	1	六角凸緣螺栓-鍍G	HEXANGON FLANGE BOLT	0
15	92061000005	1	六角防鬆螺帽(M10*1.25P)-鍍G	HEXAGON FLANGE NUT	0
16	C1486050000	2	防震橡膠	RUBBER DAMPING	0
17	90191005500	2	六角凸緣螺栓(M10*55L)	HEXAGON FLANGE BOLT (M10*55L)	0
18	P64215026000	1	油箱支撐板(ED)	OIL COVER PLATE (E.D)	0
19	P6421411600	1	擋風板連接固定板(黑色E.D.)	SOCKET, WINDSHIELD	0
20	90190601500	2	六角凸緣螺栓(M6*15L)	HEXAGON FLANGE BOLT (M6*15L)	0
21	P6706020000	4	浮動螺帽	MOVING NUT	0

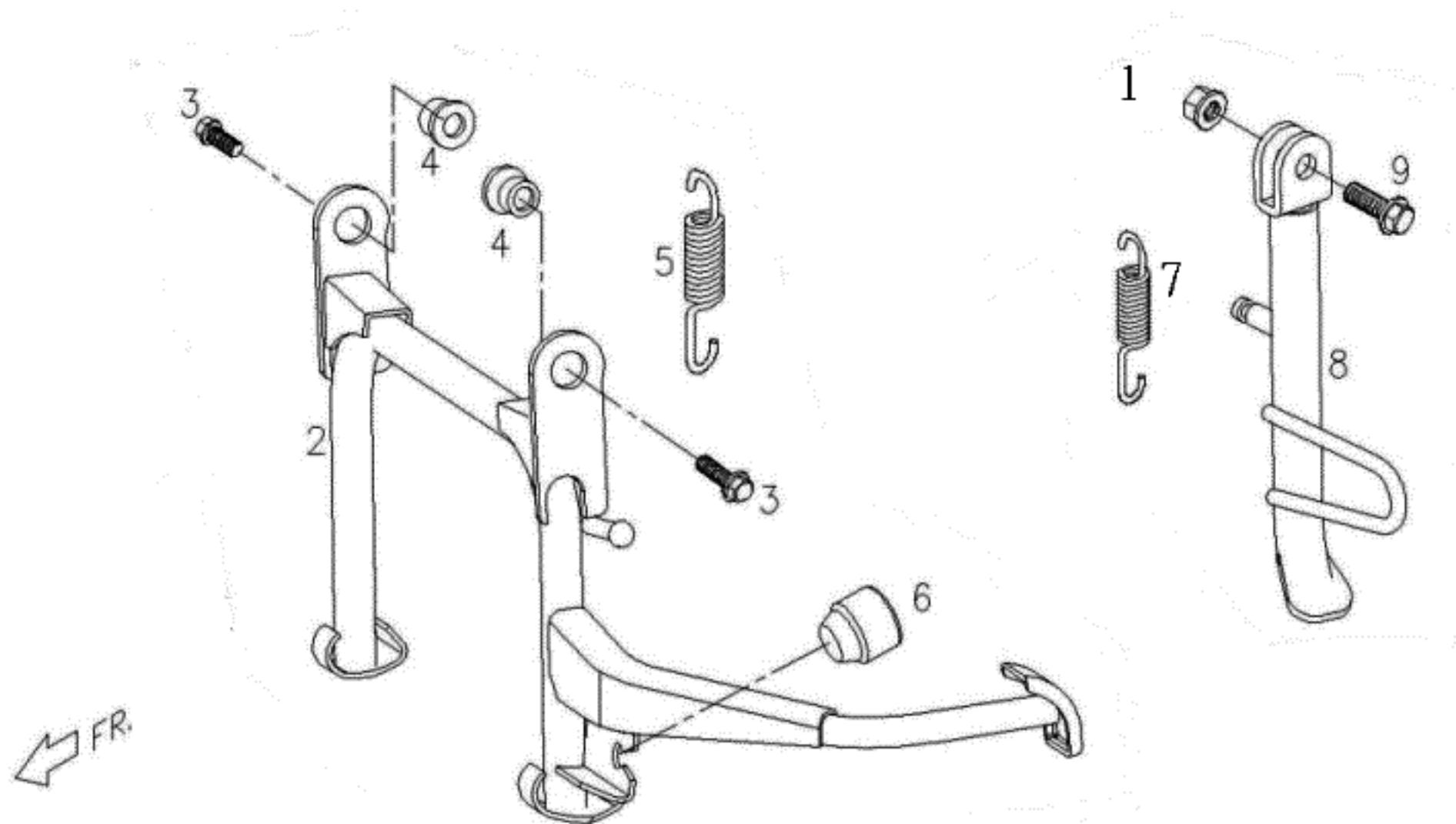
F13 電氣零件
ELECTRIC PARTS



PAI-F13 主 配 線(PAi-125)(WIRE HARENESS)					
NO.	Part No.	Q'TY	PART NAME	PART NAME	SPECIFICATION
項目	零件號碼	數量	零件中文名稱	零件英文名稱	規格
1	P6581600000J	1	主配線總成(PAi-側 腳柱安全開關)	WIRE HARNESS,MAIN	0
2	P6552000000F	1	電源鎖總成	IGNITION SWITCH COMP.	0
3	P555B020000	1	面板	FACE PLATE	0
4	90040602003	2	十字槽盤頭機器螺釘 (墨綠色)	CR PAN HD MACHINE SCREW	0
5	C2583600000	1	喇叭	HORN	0
6	90190601502	1	六角凸緣螺栓(M6*15L)(鍍墨綠)	HEXAGON FLANGE BOLT(M6*15L)	0
7	P2586011000	1	方向繼電器總成(黑-一般)	FLASHER RELAY ASSY	0
8	P6584600000F	1	點火線圈總成	COIL COMP IGNITION	0
9	92040600000	2	六角凸緣螺帽(M6*1.0P)	HEXAGON FLANGE NUT (M6*1.0P)	0
10	ES584000000	1	電壓調整器	RECTIFIER COMP.REGULATE	0
11	90190601502	2	六角凸緣螺栓(M6*15L)(鍍墨綠)	HEXAGON FLANGE BOLT(M6*15L)	0
12	C15810020000	1	起動繼電器	STARTER RELAY ASSY	0
13	P6583020000	1	電極正線	BATTERY (+) LINE	0
14	ES581710000	1	診斷接頭	DIAGNOSE ADAPTOR	0
15	ES581200000	3	繼電器	relay	0
16	ES589100000	1	傾倒感知器		0
17	90070402000	2	十字槽扁圓頭機器螺釘		0
18	92140400003	2	平墊圈(4.2D*16D*1.6T)		0
19	P6589000000F	1	ECU(電子噴射控制元件)	ECU	0
20	ES5890210000	1	ECU橡膠托架	ECU RUBBER	0

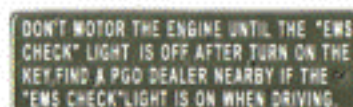
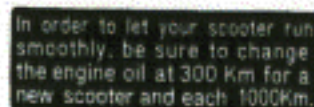
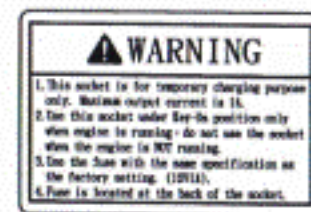
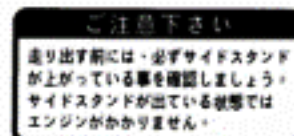
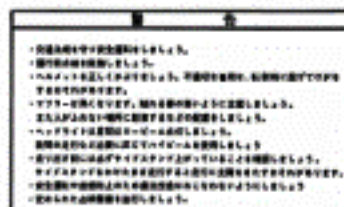
PAI-F13 主 配 線(PAi-125)(WIRE HARENESS)					
NO.	Part No.	Q'TY	PART NAME	PART NAME	SPECIFICATION
項目	零件號碼	數量	零件中文名稱	零件英文名稱	規格
21	98701200001	1	保險絲盒(5保險絲孔座)	fuse box	0
22	98701201000	1	保險絲(1A)	fuse	0
23	98701205000	1	保險絲(5A)	fuse	0
24	98701210000	1	保險絲(10A)	FUSE	0
25	98701207500	1	保險絲(7.5A)	fuse	0
26	98701201000	1	保險絲(1A)	fuse	0
27	98701200000	1	保險絲盒	fuse box	0
28	98710015000	1	保險絲(15A)單	FUSE(15A)	0
29	ES55B010000	1	鑰匙	KEY	0
31	B5583040000	1	電源供應器	SWITCH	0
32	P25816300000	1	充電座延接線	CONNECTING WIRE,SOCKET	0
33	98701201000	1	保險絲(1A)	fuse	0
34	P2581660000	1	頭燈恆亮截接線	HEAD LIGHT ADAPTOR	0
35	C2581620000	1	側腳柱安全開關		0
36	C1581200000	1	繼電器	RELAY	0

F14. 中柱 MAIN STAND



PAI-F14 中 腳柱/側腳柱 (CENTER STAND,SIDE STAND)					
NO.	Part No.	Q'TY	PART NAME	PART NAME	SPECIFICATION
項目	零件號碼	數量	零件中文名稱	零件英文名稱	規格
1	92060800002	1	六角凸緣螺帽-防鬆-鍍G	HEXAGON FLANGE NUT	0
2	P6461002600	1	中腳柱組合(ED)	CENTER STAND COMP(ED)	0
3	90191002600	2	六角凸緣螺栓	HEXAGON FLANGE BOLT	0
4	C2461010000	2	襯套	BUSH	0
5	E1461121000	1	彈簧	SPRING	0
6	C1701050000	1	緩衝橡膠	RUBBER DAMPING, CENTER STAND	0
7	C2462120000	1	側腳柱彈簧	SPRING,SIDE STAND	0
8	P6462000600J	1	側腳柱總成(E.D)側腳柱安全開關	SIDE STAND COMP.	0
9	90020803201	1	六角頭螺栓	HEXIGON HEAD BOLT	0

LABELS (PAI-125-NFI)



PAI-F15 貼紙(PAi-125)(LABELS)					
NO.	Part No.	Q'TY	PART NAME	PART NAME	SPECIFICATION
項目	零件號碼	數量	零件中文名稱	零件英文名稱	規格
1	C26030020000	1	注意事項貼紙 (日文)	NOTICE STICKER	0
2	C2601010000	1	PGO SCOOTERS名牌	STICKER, PGO SCOOTER	0
3	P66017500000	2	前叉貼紙	FRONT FORK LABEL	0
4	C16030110001	1	機油更換貼紙 (外銷)	OIL CHANGE LABEL	0
5	ES6030800001	1	"EMS CHECK" 警式燈使用說明貼紙		0
6	P66016700000	1	擋風板貼紙(可動)	WINDSHIELD LABEL	0
7	P66016800000	2	車身蓋貼紙(可動)	BODY COVER LABEL	0
8	P66016900000	2	PGO貼紙(可動)	PGO LABEL	0
9	P66033000000F	1	保險絲說明貼紙	FUSE EXPLAIN STICKER	0
10	C1601420000	1	前土除反光貼紙	REFLECTOR STICKER,FRT FENDER	0
11	C1603020000	1	汽油使用貼紙	STICKER, FUEL TYPE	0
12	C26012120000	1	後反光貼紙	RR REFLECTOR PAPER	0
13	C26030500002	1	側腳安全開關貼紙(日文)	SAFTY SWITCH STICKER,SIDE STAN	0
14	P26031100000	1	充電座警示貼紙	WARNING LABEL,SOCKET	0
15	P6352011000	1	隨車手冊(英文)PA100/125	OWNER'S MENU	0